



The City in the Country

Office of the Mayor

W240 N3065 Pewaukee Road
 Pewaukee, Wisconsin 53072
 Phone (262) 691-0770 Fax (262) 691-1798

The City's 2006 budget includes a significant change in funding library services for the City's residents. As you know in prior years the City residents were provided library services under the Waukesha County Federated Library System (WCFLS). Under the WCFLS the Waukesha County tax levy included a portion to fund library operations. On the 2004 tax bills Waukesha County charged the City of Pewaukee taxpayers \$527,208 for library services, which equaled a tax rate of 26¢ per thousand of assessed value. In 2005 the library cost will be added to your city tax bill and removed from your county tax bill thus providing a reduction in your county tax bill as a result of this funding shift.

As you know the joint library with the Village of Pewaukee is a result of a referendum vote which was held on April 6, 2004 where fifty-two (52%) percent of City residents voted to move forward with the joint library. Starting with the tax bills coming out this December the City of Pewaukee is responsible for funding the library operations now provided by the Joint City & Village Library.

City of Pewaukee

2006 vs 2005 Tax Rates

Shifting Library Costs From the County's Tax Levy to the City's Tax Levy

	<u>2005</u> <u>Budget</u>	<u>2006</u> <u>Budget</u>	<u>Change</u>
Combined City Tax Rate Plus County Library Tax			
City of Pewaukee Tax Rate	\$ 3.00	3.20	0.20
Waukesha County Tax Rate for Library	0.26	-	(0.26)
Total City & County Tax Rate	\$ 3.26	3.20	(0.06)

The reduction in the tax rate by 6 cents equates to a 2% reduction

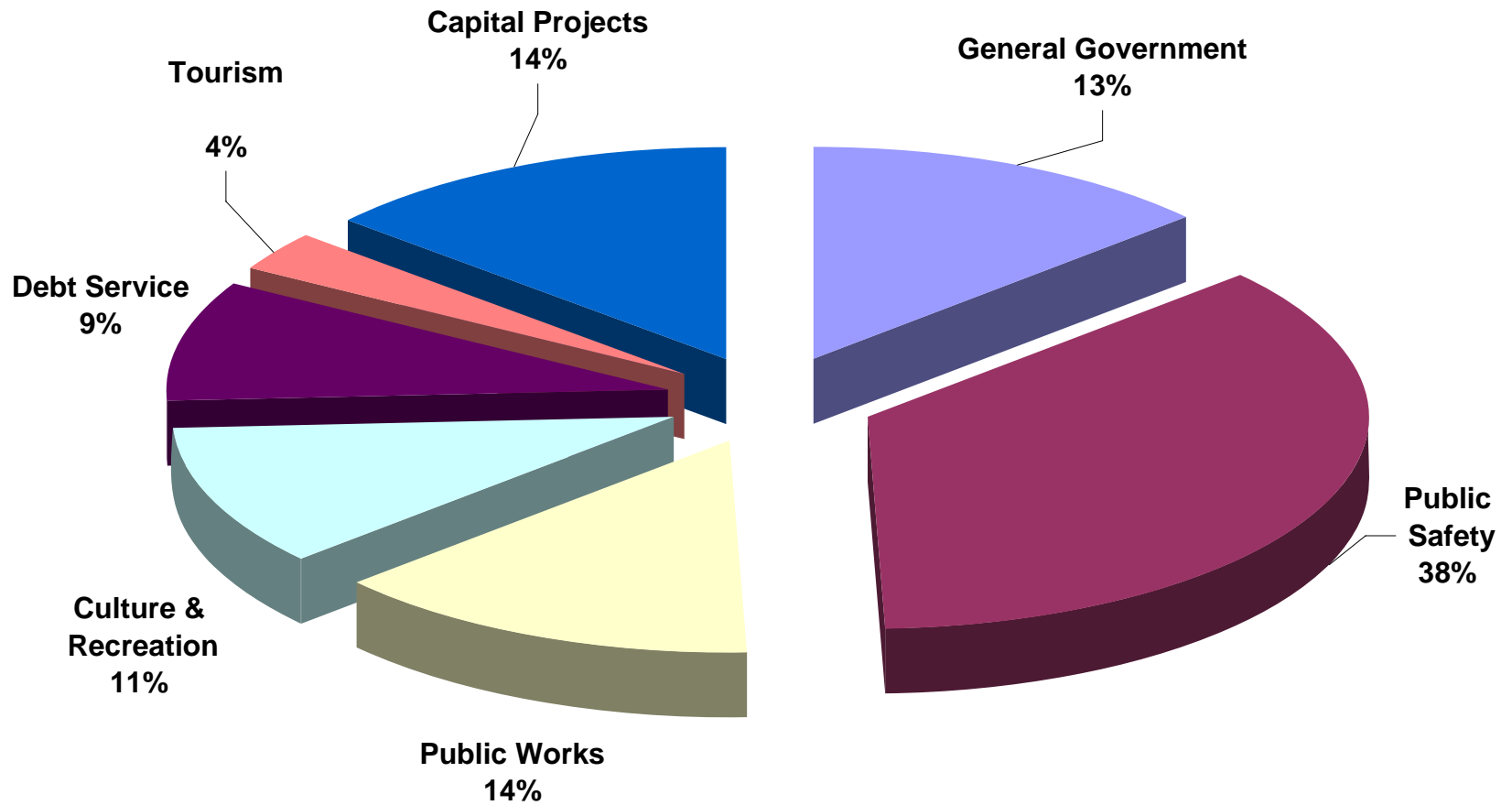
You can see from the above table that the city will be able to pay for the library operations and at the same time reduce the effective tax rate by 6¢ per thousand, which is a 2% decrease from the 2005 tax rate (a savings of \$15.00 on a home assessed at \$250,000).

To accomplish this tax reduction we have made substantial cuts in the department requests in order to arrive at a budget that falls, not only under our state mandated levy limit, but also under our combined prior year tax rate. Under the recently imposed state levy limits our 2006 rate is allowed to increase to \$3.40. Our proposed tax rate of \$3.20 is 20¢ per thousand less than what is allowed by the state, resulting in a savings of \$50.00 for a home assessed at \$250,000.

CITY OF PEWAUKEE

2006 Proposed Budget

Governmental Funds Expenditures



CITY OF PEWAUKEE

2006 BUDGET

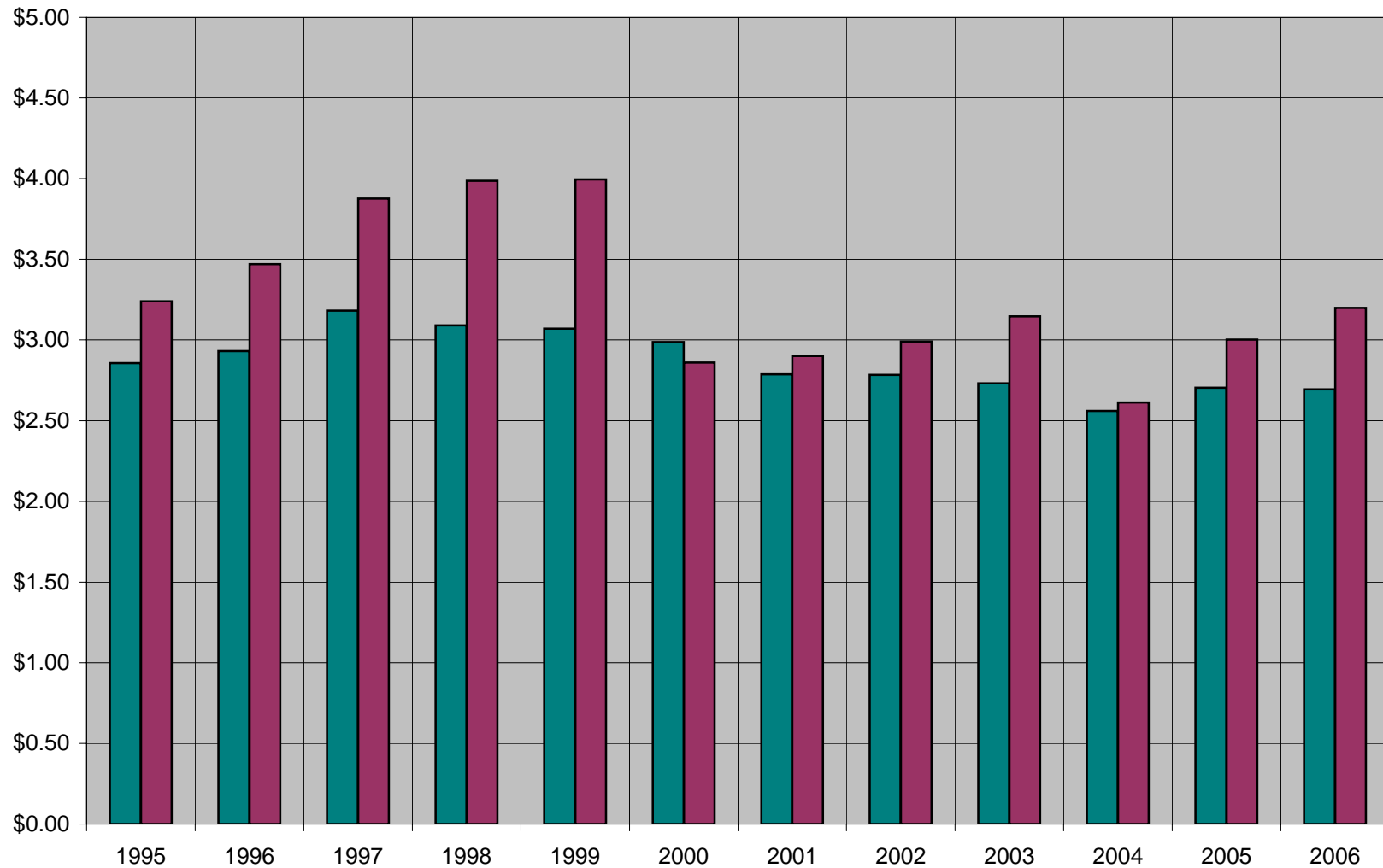
Contents

PROPOSED BUDGET	<u>Page</u>
Property Taxes	
Chart - Equalized & Assessed Tax Rates 1995 to 2006	1
Historical Tax Rate Comparison	2
Governmental Funds	
All Governmental Funds Consolidated Summary	3
General Fund:	
Summary	4
Revenues	6
Expenditures	10
Five Year Capital	40
Special Revenue Funds:	
Park Dedication Fund	48
Impact Fee Fund	49
Tourism	50
Green Space Program	51
Debt Service Fund	52
Capital Projects Funds:	
Road Projects	53
Storm Water Management	54
City Hall Construction Project	55
Fire Stations	56
Park Land Acquisition	57
Supplemental Information	
Assessed and Equalized Tax Rates 1995 - 2006 Budgets	58

City of Pewaukee

Equalized & Assessed Tax Rates, Per \$1,000 of Value 1995 - 2006

Equalized Rate
Assessed Rate



City of Pewaukee
 2006 Budget
 Historical Tax Rate Comparison

	2006 Budget	Budget Year					<i>2000 (Revalue)</i>
		<i>2005</i>	<i>2004 (Revalue)</i>	<i>2003</i>	<i>2002</i>	<i>2001</i>	
Assessed Value (in millions, estimated)	2,067.500	2,018.157	1,993.275	1,623.326	1,563.799	1,463.314	1,370.941
Tax Levy							
For Existing Operations	5,978,945	5,837,168	5,222,388	5,106,934	4,677,230	4,243,615	3,921,000
For Library Operations	634,302	220,414					
Total	6,613,247	6,057,582	5,222,388	5,106,934	4,677,230	4,243,615	3,921,000
Tax Rate per \$1,000 of Assessed Value							
For Existing Operations	\$2.892	\$2.892	\$2.620	\$3.146	\$2.991	\$2.900	\$2.860
For Library Operations	\$0.307	\$0.109					
Total	\$3.199	\$3.002	\$2.620	\$3.146	\$2.991	\$2.900	\$2.860
Dollar Increase (Decrease) over Prior Year							
For Existing Operations	(\$0.000)	\$0.272	(\$0.526)	\$0.155	\$0.091	\$0.040	\$2.860
For Library Operations ⁽¹⁾	\$0.198	\$0.109					
Total	\$0.197	\$0.382	(\$0.526)	\$0.155	\$0.091	\$0.040	\$2.860
Increase (Decrease) on \$250k Assessment	\$ 49.28	\$ 95.38					

Property Tax Components	2006 Budget	Historical Levys					
		<i>2005</i>	<i>2004</i>	<i>2003</i>	<i>2002</i>	<i>2001</i>	<i>2000</i>
General Operations	\$ 4,764,040	4,668,968	4,441,588	4,236,434	3,754,988	3,444,505	2,903,500
Library Operations	634,302	220,414					
Debt Service	860,305	683,170	443,500	430,500	465,667	412,610	415,000
Road Projects	354,600	345,030	337,300	420,000	436,575	386,500	312,500
Fire Station Construction		140,000					
Storm Water Management				20,000	20,000		
Water & Sewer Utilities							290,000
Sub-total tax levy	6,613,247	6,057,582	5,222,388	5,106,934	4,677,230	4,243,615	3,921,000

CITY OF PEWAUKEE
2006 Consolidated Budget
All Governmental Fund Types - DRAFT

	2004 Actual	2005			2006 Budget	
		6 Month Actual	6 Month Estimate	Year End Forecast		
REVENUES						
Property Taxes	\$ 5,222,388	6,057,582	-	6,057,582	6,057,582	6,613,247
Non-Property Taxes	899,883	254,943	1,005,843	1,260,846	945,000	1,004,700
Special Assessments	799,020	736,986	48,107	787,173	778,500	776,850
Intergovernmental	1,015,098	333,327	750,114	1,087,813	1,572,506	1,645,753
Licenses and Permits	417,467	184,709	267,572	456,201	467,025	511,930
Fines, Forfeitures and Penalties	371,716	289,456	100,050	431,202	455,500	400,200
Public Charges for Services	532,730	332,302	242,932	591,597	545,300	617,300
Intergov'l Charges for Services	802,660	258,172	676,128	934,300	946,280	920,500
Impact Fees	221,391	105,748	90,750	196,498	156,300	354,500
Interest	98,275	121,414	192,688	314,102	98,500	375,400
Miscellaneous	71,582	70,175	-	141,646	37,000	94,000
Total Revenues	10,452,210	8,744,814	3,374,184	12,258,960	12,059,493	13,314,380
EXPENDITURES						
General Government	1,566,727	779,756	821,860	1,601,616	1,832,882	1,840,279
Public Safety	4,781,370	2,250,200	2,332,143	4,582,343	4,710,071	4,973,840
Public Works	1,816,411	707,615	1,094,722	1,802,337	1,896,487	1,906,226
Culture and Recreation	1,739,522	453,183	1,077,674	1,530,857	1,553,967	1,488,730
Tourism	357,514	91,661	466,452	558,113	402,500	432,000
Capital Projects	3,873,555	161,326	592,519	753,845	7,176,088	1,875,500
Debt Service	853,507	683,347	272,957	956,304	1,113,606	1,266,546
Total Expenditures	14,988,607	5,127,088	6,658,327	11,785,415	18,685,601	13,783,121
Excess of revenues over (under) expenditures	(4,536,397)	3,617,726	(3,284,143)	473,545	(6,626,108)	(468,741)
OTHER FIN. SOURCES (USES)						
Proceeds of Long-Term Debt	4,813,583	-	-	-	1,000,000	-
Other	30,148	-	-	-	-	-
Excess of revenues and other sources over (under) expenditures	307,334	3,617,726	(3,284,143)	473,545	(5,626,108)	(468,741)
FUND BALANCES						
Beginning of Period	9,751,258	10,058,592	13,676,318	10,058,592	10,058,592	10,532,137
End of Period	10,058,592	13,676,318	10,392,175	10,532,137	4,432,484	10,063,396
TAXES LEVIED FOR MUNICIPALITY	\$ 5,222,388	6,057,582	-	6,057,582	6,057,582	6,613,247

**CITY OF PEWAUKEE
2006 PROPOSED BUDGET
GENERAL FUND SUMMARY - DRAFT**

	2004 Actual	2005			2006 Budget
		6 Month Actual	Year End Forecast	2005 Budget	
REVENUES					
Taxes	4,858,555	4,889,438	5,628,328	5,345,632	5,878,442
Special Charges	551,181	562,766	564,846	603,500	591,850
Intergovernmental	1,015,098	333,327	1,051,623	1,021,446	1,014,853
Licenses and Permits	417,467	184,709	456,201	467,025	511,930
Fines, Forfeitures and Penalties	371,716	289,456	431,202	455,500	400,200
Public Charges for Services	532,730	332,302	591,597	545,300	617,300
Intergovernmental Charges for Services	802,660	258,172	934,300	946,280	920,500
Interest	47,860	73,182	150,182	70,000	180,000
Miscellaneous	71,332	70,175	141,646	37,000	94,000
Total revenues and other sources	8,668,599	6,993,527	9,949,925	9,491,683	10,209,075
GENERAL GOVERNMENT					
Mayor	10,426	4,498	9,649	10,110	10,021
Common Council	43,787	25,241	42,823	46,910	43,549
Police Commission	366	323	824	810	810
Public Works Commission	-	-	538	700	700
Administration	61,878	33,265	92,823	104,900	119,468
Insurance	154,068	122,825	182,615	180,600	205,600
Professional Services	281,307	95,076	191,160	193,720	199,700
Planning	52,516	30,001	66,590	63,300	66,990
Board of Appeals	674	35	1,504	1,880	1,880
Unclassified	152,860	40,456	55,555	211,470	113,000
Court	108,467	38,636	87,186	87,080	90,973
Finance	254,453	130,457	261,253	284,044	267,642
Elections	34,509	10,579	32,734	63,700	43,480
Facilities	85,713	51,970	110,964	110,500	123,000
Human Resources	55,663	26,415	48,631	47,298	48,632
Property Assessment	175,843	77,174	184,455	191,420	233,800
Information Technology	94,090	92,805	232,187	234,010	269,161
Board of Review	108	-	125	430	1,872
Total	1,566,727	779,756	1,601,616	1,832,882	1,840,279

**CITY OF PEWAUKEE
2006 PROPOSED BUDGET
GENERAL FUND SUMMARY - DRAFT**

	2004 Actual	2005			2006 Budget
		6 Month Actual	Year End Forecast	2005 Budget	
PUBLIC SAFETY					
Law Enforcement	2,737,022	1,253,427	2,699,256	2,789,483	2,914,479
Fire Services	1,757,964	857,947	1,587,193	1,627,735	1,729,088
Building Services	282,354	136,698	287,237	281,253	318,173
Safety Program	4,031	2,128	8,657	11,600	12,100
Total	4,781,370	2,250,200	4,582,343	4,710,071	4,973,840
PUBLIC WORKS					
Engineering	261,510	121,468	253,080	303,707	286,476
Highways	688,169	290,666	673,399	721,887	829,051
Campus Facilities	-	-	-	-	-
Weed, Lake & Wetlands Control	279,040	44,691	269,869	258,603	155,113
Animal Control	6,699	6,699	6,699	7,000	7,000
Solid Waste & Recycling	580,993	244,091	599,290	605,290	628,586
Total	1,816,411	707,615	1,802,337	1,896,487	1,906,226
Culture & Recreation					
Library	1,000,000	103,705	720,414	720,414	634,302
Parks	348,518	171,523	355,536	353,193	357,533
Recreation Programs	391,004	177,955	454,907	480,360	496,895
Total	1,739,522	453,183	1,530,857	1,553,967	1,488,730
Total expenditures	9,904,031	4,190,754	9,517,153	9,993,407	10,209,075
Excess of revenues and other sources over (under) expenditures	(1,235,432)	2,802,773	432,772	(501,724)	-
OTHER FINANCING SOURCES (USES)					
Proceeds of Long-Term Debt	1,501,403	-	-	-	-
Transfer From (To) Other Funds	30,148	-	(300,000)	-	-
Excess of revenues and other sources over (under) expenditures and other financing uses	296,119	2,802,773	132,772	(501,724)	-
FUND BALANCE					
Beginning of Year	2,670,188	2,966,307	2,966,307	2,966,307	3,099,079
End of Year	2,966,307	5,769,080	3,099,079	2,464,583	3,099,079

Fund Balance as % of Expenditures

27%

33%

30.4%

**CITY OF PEWAUKEE
2006 PROPOSED BUDGET
GENERAL FUND REVENUES - DRAFT**

	2004 Actual	2005			2006 Budget	
		6 Month Actual	9 Month Actual	Year End Forecast		
Taxes						
10- 41110 General Tax Levy	4,441,588	4,889,382	4,889,382	4,889,382	4,889,382	5,398,342
10- 41115 Omitted Taxes	-	-	159,325	311,000	-	-
10- 41199 Other	2	-	-	-	-	-
10- 41210 Public Accomodation Tax	85,220	-	-	86,250	86,250	92,600
10- 41220 Sales Tax Discount	-	56	86	116	-	-
10- 41310 Tax Equivalent on Water Utility	325,452	-	-	332,000	370,000	350,000
10- 41900 Ag Use Conv Penalties	6,293	-	-	9,580	-	37,500
Total Taxes	4,858,555	4,889,438	5,048,793	5,628,328	5,345,632	5,878,442
Special Charges						
10- 46421 Lake Weed Control	-	-	-	-	38,000	-
10- 46420 Garbage Collection	551,181	562,766	564,846	564,846	565,500	591,850
Total Special	551,181	562,766	564,846	564,846	603,500	591,850
Intergovernmental						
10- 43410 State Shared Revenues	344,775	-	51,031	360,133	340,206	360,133
10- 43415 Exempt Computer Aids	112,516	88,102	88,102	88,102	85,000	95,450
10- 43420 State Fire Dues	76,444	78,168	78,168	78,168	84,150	79,730
10- 43521 Police Training Aids	4,451	-	-	-	3,500	3,500
10- 43522 Water Safety Aids	36,324	33,148	33,148	33,148	35,000	35,000
10- 43212 Federal Grants	1,187	550	4,814	4,814	3,000	-
10- 43213 Police Equitable Sharing-DEA Grant	-	11,012	-	11,012	-	1,000
10- 43214 Federal Homeland Security Grant	3,600	-	-	-	-	-
10- 43215 Fire ACT Grant	41,581	510	510	510	-	-
10- 43524 EMS Funding Assistance Program	3,702	401	4,119	4,119	-	-
10- 43529 Tank Inspection Fees	12,894	3,104	6,754	6,754	6,100	9,000
10- 43530 Transportation Aids-State	375,965	93,961	187,902	375,492	375,490	406,560
10- 43692 Lake Weed Control Grant	-	-	32,074	65,000	65,000	-
10- 43790 County Recycling Aids	-	24,371	24,371	24,371	24,000	24,480
10- 43791 Insect Control Grant	1,659	-	-	-	-	-
Total Intergovernmental	1,015,098	333,327	510,993	1,051,623	1,021,446	1,014,853

**CITY OF PEWAUKEE
2006 PROPOSED BUDGET
GENERAL FUND REVENUES - DRAFT**

	2004 Actual	2005			2006 Budget	
		6 Month Actual	9 Month Actual	Year End Forecast		
Licenses and Permits						
10- 44110 Class A Licenses	30	300	300	300	240	300
10- 44111 Class B Licenses	13,460	13,800	13,800	13,800	12,900	13,800
10- 44112 Special Class B Licenses	30	20	30	30	10	20
10- 44113 Class A Wholesale	25	35	35	35	25	35
10- 44120 Operator License	5,015	3,580	4,960	4,960	4,500	4,500
10- 44121 Cigarette Licenses	800	762	813	813	800	800
10- 44123 Amusement Licenses	940	770	770	770	900	900
10- 44124 Hotel/ Motel Licenses	75	50	75	75	150	75
10- 44125 Cable TV Franchise	81,513	-	41,075	82,150	76,000	86,000
10- 44200 Dog and Kennel Licenses	5,743	6,839	7,436	7,436	10,000	8,000
10- 44300 Building Permits	218,135	114,658	189,629	250,000	250,000	280,000
10- 44301 Electrical Permits	38,795	20,078	35,366	50,000	60,000	60,000
10- 44302 Plumbing Permits	38,294	15,413	33,540	33,540	40,000	40,000
10- 44306 Erosion Permits	7,100	2,820	4,585	4,585	4,500	6,000
Cult 44307 Property Record Maintenance Permit Fee	-	-	-	-	-	-
10- 44310 Sign Permits	887	846	1,144	1,144	2,000	4,000
10- 44311 State Code Stamps	1,200	575	1,075	1,075	1,500	1,500
10- 44400 Zoning Hearings	5,110	2,613	3,738	3,738	3,000	5,000
10- 44900 Street Opening Permits	-	300	300	500	500	500
10- 44901 Other Permits	315	1,250	1,250	1,250	-	500
Total Licenses and Permits	417,467	184,709	339,920	456,201	467,025	511,930
Fines, Forfeitures and Penalties						
10- 45110 Court Penalties	371,186	289,379	430,568	430,568	455,000	400,000
10- 45190 Animal Fines	530	57	114	114	500	200
10- 45320 Deposits Forfeited	-	20	520	520	-	-
Total Fines, Forfeitures and Penalties	371,716	289,456	431,202	431,202	455,500	400,200

**CITY OF PEWAUKEE
2006 PROPOSED BUDGET
GENERAL FUND REVENUES - DRAFT**

	2004 Actual	2005			2006 Budget
		6 Month Actual	9 Month Actual	Year End Forecast	
Public Charges for Services					
10- 46160 Administrative Charges	759	409	620	620	600
10- 46180 Publication Fees	1,834	782	1,182	1,182	1,500
10- 46181 House Numbers	811	348	684	750	750
10- 46183 Sale of Maps and Books	1,754	816	1,527	1,527	1,500
10- 46184 Plat and CSM Review Fees	2,930	1,720	2,089	2,089	2,000
10- 46186 Advertising Class A and B	35	815	815	815	600
10- 46187 Outside Eng. Fees Reimbursed	50,000	27,274	41,544	57,274	15,000
10- 46188 Legal Fees Reimbursed	10,685	3,878	3,878	3,878	7,000
10- 46189 In-House Eng. Fees Reimbursed	4,391	14,380	14,380	17,880	10,000
10- 46190 Police Sales & Copies	2,783	1,074	1,869	1,869	1,600
10- 46195 Boat Launch Fees	8,707	3,807	8,561	8,561	7,200
10- 46211 Police Services	4,800	943	943	943	-
10- 46220 Fire Runs	-	-	-	-	500
10- 46225 Fire Runs on Fed/St Roads	820	3,029	8,609	8,029	15,000
10- 46230 Ambulance Runs	232,853	99,987	158,293	250,000	250,000
10- 46240 Private Fire Prot. Plan Review Fees	4,090	1,435	2,460	2,000	2,000
10- 46250 Fire/EMS Education Programs	-	120	120	120	-
10- 46260 False Fire Alarm Fees	-	-	-	-	1,000
10- 46311 Highway Materials & Services	187	-	300	300	100
10- 46312 Culvert Installation Income	5,319	1,428	5,910	5,910	6,000
10- 46313 Street Light Reimbursement	42	139	(22)	239	350
10- 46470 Recycling Revenues	3,821	1,749	2,839	3,000	3,000
10- 46711 Park Equipment Usage	7,140	4,195	6,370	11,995	12,000
10- 46720 Park Reservation Fees	19,713	21,829	25,420	25,420	23,000
10- 46721 Recreation Programs	96,887	75,846	93,157	95,000	95,000
10- 46722 Field Trips	23,180	24,357	37,948	37,948	25,000
10- 46723 Club Use Fees	10,147	4,074	4,649	11,074	12,000
10- 46724 Park Advertising	5	2,244	2,244	2,600	2,600
10- 46725 LOL Program	38,295	35,532	38,986	38,597	50,000
10- 46726 WPRA Ticket Sales	-	-	-	-	-
10- 46950 Sundry Revenues	742	92	1,977	1,977	-
Total Public Chrg for Service	532,730	332,302	467,353	591,597	545,300

**CITY OF PEWAUKEE
2006 PROPOSED BUDGET
GENERAL FUND REVENUES - DRAFT**

	2004 Actual	2005			2006 Budget	
		6 Month Actual	9 Month Actual	Year End Forecast		
Intergovernmental Charges for Services						
10- 47320 Admin Services for W&S Utility	30,000	-	30,000	30,000	30,000	39,000
10- 47321 Winter Lake Patrol Reimbursed	13,304	10,327	10,327	13,300	13,300	11,400
10- 47322 Summer Lake Patrol Reimbursed	11,304	10,455	10,455	12,500	12,500	14,500
10- 47370 Shared Recreation Programs	172,455	88,231	109,430	210,231	211,100	197,800
10- 47380 Building Services Program	78,790	24,990	41,470	80,000	90,000	90,000
10- 47421 Contracted Fire Services	477,050	124,169	275,905	524,169	525,280	508,000
10- 47422 Contracted Fire Inspection Services	128	-	-	55,000	55,000	49,000
10- 47500 Services provided to SEWPRC	19,629	-	-	9,100	9,100	10,800
Total Intg'v'tl Chrgs for Serv	802,660	258,172	477,586	934,300	946,280	920,500
Interest						
10- 48100 Interest on Investments	47,860	73,182	139,679	150,182	70,000	180,000
Total Interest	47,860	73,182	139,679	150,182	70,000	180,000
Miscellaneous						
10- 48110 Interest on Delq PP Taxes	-	1,695	1,735	1,735	-	-
10- 48120 Interest on A/R	-	1,261	1,450	1,450	-	-
10- 48200 Rent - Utility Division	10,000	30,000	30,000	30,000	30,000	32,000
10- 48210 Rent - Wisconsin Bell	6,775	6,884	10,284	10,284	7,000	7,000
10- 48301 Sale of Police Assets	-	-	28,295	28,295	-	9,000
10- 48302 Sale of Fire Assets	-	2,288	2,288	2,288	-	20,000
10- 48303 Sale of Highway Assets	25,776	-	-	-	-	26,000
10- 48309 Sale of Other Assets	-	1,967	1,967	1,967	-	-
10- 48460 Insurance Recoveries	4,935	17,630	18,130	35,760	-	-
10- 48500 Gifts & Donations	-	50	50	100	-	-
10- 48502 Police Equipment Donations	-	-	1,370	1,370	-	-
10- 48503 Donations - Community Serv. Prog	-	7,860	19,660	27,520	-	-
10- 48508 Fire Donations	-	540	540	1,080	-	-
10- 48900 Miscellaneous Revenues	23,846	-	(203)	(203)	-	-
Total Miscellaneous	71,332	70,175	115,567	141,646	37,000	94,000
Total Revenues	8,668,599	6,993,527	8,095,938	9,949,925	9,491,683	10,209,075

CITY OF PEWAUKEE
 2006 PROPOSED BUDGET
 GENERAL FUND EXPENDITURES -DRAFT

	2004 Actual	2005			2006		Proposed		
		6 Month Actual	6 Month Estimate	Year End Forecast	2005 Budget	Department Request	Mayor's Modifications	2006 Budget	% Change
ADMINISTRATION									
Mayor									
10- 51100- 110 Salary	7,830	3,503	4,087	7,590	7,590	7,590	-	7,590	0.0%
10- 51100- 130 Social Security	702	320	364	684	670	581	-	581	-13.3%
10- 51100- 140 Auto Allowance	1,350	675	675	1,350	1,350	1,350	-	1,350	0.0%
10- 51100- 310 Office Supplies	12	-	-	-	-	-	-	-	-
10- 51100- 320 Dues & Memberships	500	-	-	-	-	-	-	-	-
10- 51100- 321 Meetings/Misc	32	-	25	25	500	500	-	500	0.0%
Total Mayor	10,426	4,498	5,151	9,649	10,110	10,021	-	10,021	-0.9%
Common Council									
10- 51110- 110 Salary	31,404	13,957	13,570	27,527	30,240	28,098	-	28,098	-7.1%
10- 51110- 130 Social Security	2,586	1,251	1,191	2,442	2,770	2,151	-	2,151	-22.3%
10- 51110- 140 Auto Allowance	2,552	2,400	2,000	4,400	5,600	5,000	-	5,000	-10.7%
10- 51110- 310 Office Supplies	37	121	83	204	200	200	-	200	0.0%
10- 51110- 320 Dues and Memberships	6,335	7,331	-	7,331	7,500	7,500	-	7,500	0.0%
10- 51110- 321 Meetings and Conventions	873	181	738	919	600	600	-	600	0.0%
Total Common Council	43,787	25,241	17,582	42,823	46,910	43,549	-	43,549	-7.2%
Police Commission									
10- 51121- 130 Social security	17	23	24	47	60	60	-	60	0.0%
10- 51121- 141 Commissioner Fees	220	300	320	620	600	600	-	600	0.0%
10- 51121- 310 Office Supplies	129	-	157	157	150	150	-	150	0.0%
Total Police Commission	366	323	501	824	810	810	-	810	0.0%
Public Works Commission									
10- 51133- 130 Social security	-	-	38	38	50	50	-	50	0.0%
10- 51133- 141 Commissioner Fees	-	-	500	500	500	500	-	500	0.0%
10- 51133- 310 Office Supplies	-	-	-	-	150	150	-	150	0.0%
Total Public Works Commission	-	-	538	538	700	700	-	700	0.0%

CITY OF PEWAUKEE
2006 PROPOSED BUDGET
GENERAL FUND EXPENDITURES -DRAFT

	2004 Actual	2005			2006		Proposed		
		6 Month Actual	6 Month Estimate	Year End Forecast	2005 Budget	Department Request	Mayor's Modifications	2006 Budget	% Change
Administrator									
10- 51410- 110 Administrator	-	8,654	40,385	49,039	59,100	83,200	(800)	82,400	39.4%
10- 51410- 130 Social Security	-	662	3,089	3,751	4,520	6,365	(61)	6,304	39.5%
10- 51410- 131 Health Insurance	-	-	1,197	1,197	6,600	4,981	-	4,981	-24.5%
10- 51410- 132 Dental Insurance	-	-	120	120	460	288	-	288	-37.4%
10- 51410- 133 Optical Insurance	-	-	70	70	70	144	-	144	105.7%
10- 51410- 134 Life Insurance	-	-	80	80	80	184	-	184	130.3%
10- 51410- 135 Pension	-	-	-	-	-	5,308	(51)	5,257	NEW
10- 51410- 136 Disability Insurance	-	-	220	220	220	360	-	360	63.6%
10- 51410- 215 Administrator (Contractor)	46,800	15,900	-	15,900	15,900	-	-	-	-100.0%
10- 51410- 310 Office Supplies and Expense	127	406	528	934	650	650	-	650	0.0%
10- 51410- 311 Postage	176	157	327	484	250	500	-	500	100.0%
10- 51410- 314 Newsletter	13,078	4,181	10,000	14,181	15,000	15,000	-	15,000	0.0%
10- 51410- 320 Dues and Memberships	-	-	-	-	-	500	-	500	NEW
10- 51410- 321 Meetings and Conventions	-	375	15	390	250	2,000	-	2,000	NEW
10- 51410- 323 Subscriptions	151	-	-	-	200	-	-	-	-100.0%
10- 51410- 330 Mileage	-	-	219	219	-	500	-	500	NEW
10- Culture 360 Waukesha Co. Coop Council	-	-	400	400	400	400	-	400	0.0%
10- 51410- 810 New Equipment	1,546	2,930	2,908	5,838	1,200	-	-	-	-100.0%
Total Administrator	61,878	33,265	59,558	92,823	104,900	120,381	(912)	119,468	13.9%
Insurance									
10- 51930- 219 Insurance Consultant	20,815	10,239	8,100	18,339	20,000	20,000	-	20,000	0.0%
10- 51930- 510 Officials Bond	-	2,142	-	2,142	-	-	-	-	NEW
10- 51930- 511 Workers Compensation	76,124	56,300	40,000	96,300	85,000	135,000	(25,000)	110,000	29.4%
10- 51930- 512 Property and Liability	57,129	54,144	11,690	65,834	75,600	75,600	-	75,600	0.0%
Total Insurance	154,068	122,825	59,790	182,615	180,600	230,600	(25,000)	205,600	13.8%

CITY OF PEWAUKEE
 2006 PROPOSED BUDGET
 GENERAL FUND EXPENDITURES -DRAFT

	2004 Actual	2005			2006		Proposed		
		6 Month Actual	6 Month Estimate	Year End Forecast	2005 Budget	Department Request	Mayor's Modifications	2006 Budget	% Change
Outside Services Attorney									
10- 51300- 210 General Affairs	78,521	26,572	38,428	65,000	65,000	66,950	(1,950)	65,000	0.0%
10- 51121- 210 Police Commission	2,648	325	1,000	1,325	2,000	2,000	-	2,000	0.0%
10- 51450- 210 Human Resources	246	1,540	1,460	3,000	3,000	3,000	-	3,000	0.0%
10- 51530- 210 Property Assessment	11,712	1,783	800	2,583	3,000	10,000	-	10,000	233.3%
10- 52100- 210 Police Department	69,306	22,800	20,000	42,800	50,000	50,000	(7,000)	43,000	-14.0%
10- 52110- 210 Summer Lake Patrol	990	318	-	318	250	400	(150)	250	0.0%
10- 52120- 210 Winter Lake Patrol	900	658	-	658	200	400	(200)	200	0.0%
10- 52400- 210 Building Services	2,210	-	6,400	6,400	1,000	1,000	-	1,000	0.0%
10- 51535- 210 Board of Review	-	640	200	840	1,000	6,000	-	6,000	500.0%
10- 53640- 210 Weed Control	11,498	1,615	-	1,615	100	100	-	100	0.0%
10- 55200- 210 Parks	1,730	-	300	300	500	500	-	500	0.0%
10- 56300- 210 Planning Commission	2,615	1,780	2,025	3,805	500	500	-	500	0.0%
10- 56400- 210 Board of Appeals	9,521	730	800	1,530	2,000	2,000	-	2,000	0.0%
Total Attorney	191,897	58,761	71,413	130,174	128,550	142,850	(9,300)	133,550	3.9%
Accounting									
10- 51510- 212 Audit	28,534	19,044	15,800	34,844	35,000	35,000	-	35,000	0.0%
10- 51510- 213 Other Services	46,405	2,025	10,000	12,025	20,000	20,000	(5,000)	15,000	-25.0%
Total Accountants	74,939	21,069	25,800	46,869	55,000	55,000	(5,000)	50,000	-9.1%
Other Outside Services									
10- 51510- 215 Investment Expense	1,326	1,097	2,040	3,137	-	3,000	-	3,000	NEW
10- 51510- 219 Other Professional Services	1,544	97	-	97	1,500	1,000	-	1,000	-33.3%
10- 51510- 219 Weights & Measures	-	-	-	-	-	2,500	-	2,500	NEW
10- 51510- 234 Trunked Radio Operating Costs	6,417	12,998	(6,332)	6,666	6,670	4,650	-	4,650	-30.3%
10- 51980- 217 Pension Administrator	5,184	1,054	3,163	4,217	2,000	5,000	-	5,000	150.0%
Total Other	14,471	15,246	(1,129)	14,117	10,170	16,150	-	16,150	58.8%
Total Outside Services	281,307	95,076	96,084	191,160	193,720	214,000	(14,300)	199,700	1

CITY OF PEWAUKEE
 2006 PROPOSED BUDGET
 GENERAL FUND EXPENDITURES -DRAFT

	2004 Actual	2005			2006		Proposed		
		6 Month Actual	6 Month Estimate	Year End Forecast	2005 Budget	Department Request	Mayor's Modifications	2006 Budget	% Change
Plan Commission									
10- 56300- 130 Social Security (Commissioners)	64	26	47	73	100	100	-	100	0.0%
10- 56300- 141 Commissioner's Fees	900	280	620	900	1,000	1,000	-	1,000	0.0%
10- 56300- 211 Plan Commission	-	-	-	-	200	200	-	200	0.0%
10- 56300- 215 Planner (Contract)	46,800	25,940	34,300	60,240	57,500	62,040	-	62,040	7.9%
10- 56300- 310 Office Supplies and Expenses	793	201	400	601	1,000	1,000	-	1,000	0.0%
10- 56300- 311 Postage	731	438	363	801	750	900	-	900	20.0%
10- 56300- 313 Notices and Publications	1,428	443	859	1,302	1,400	1,200	-	1,200	-14.3%
10- 56300- 349 Operating Supplies	254	656	-	656	350	550	-	550	57.1%
10- 56300- 810 New Equipment	1,546	2,017	-	2,017	1,000	1,000	(1,000)	-	-100.0%
Total Planning Commission	52,516	30,001	36,589	66,590	63,300	67,990	(1,000)	66,990	5.8%
Board of Appeals									
10- 56400- 130 Social Security	23	-	77	77	80	80	-	80	0.0%
10- 56400- 141 Meeting Fees	300	-	1,000	1,000	1,000	1,000	-	1,000	0.0%
10- 56400- 310 Office Supplies and Expenses	-	9	16	25	300	300	-	300	0.0%
10- 56400- 313 Notices and Publications	351	26	376	402	500	500	-	500	0.0%
Total Board of Appeals	674	35	1,469	1,504	1,880	1,880	-	1,880	0.0%
Unclassified:									
10- 51980- 340 Operating Expenses	-	-	500	500	2,500	2,500	-	2,500	0.0%
10- 51980- 340 Cops and Bobbers Program(renamed Comr	-	-	-	-	-	-	-	-	0.0%
10- 51980- 349 Police Dept Comm Serv Programs	16,510	8,525	9,399	17,924	-	-	-	-	
10- 51980- 990 Sundry	600	-	200	200	500	500	-	500	0.0%
10- 51980- 991 Contingency Appropriation	116,264	28,151	-	28,151	198,470	100,000	-	100,000	-49.6%
Total Unclassified	133,374	36,676	10,099	46,775	201,470	103,000	-	103,000	-48.9%
Total Administration	738,395	347,940	287,361	635,301	804,400	792,931	(41,212)	751,718	-6.5%

CITY OF PEWAUKEE
 2006 PROPOSED BUDGET
 GENERAL FUND EXPENDITURES -DRAFT

	2004 Actual	2005			2006		Proposed		
		6 Month Actual	6 Month Estimate	Year End Forecast	2005 Budget	Department Request	Mayor's Modifications	2006 Budget	% Change
Municipal Court									
10- 51200- 110 Judge	12,254	5,723	6,677	12,400	12,400	12,809	(37)	12,772	3.0%
10- 51200- 121 Court Administrator	33,973	16,493	18,413	34,906	34,195	35,214	-	35,214	3.0%
10- 51200- 125 Bailiff	8,440	3,960	4,620	8,580	8,580	9,026	(189)	8,837	3.0%
10- 51200- 127 Cadet & Clerical	4,460	-	4,120	4,120	4,120	4,244	-	4,244	3.0%
10- 51200- 130 Social Security	4,476	2,003	2,588	4,591	4,534	4,679	(7)	4,672	3.0%
10- 51200- 131 Health Insurance	8,022	4,314	4,302	8,616	8,666	10,068	-	10,068	16.2%
10- 51200- 132 Dental Insurance	669	506	506	1,012	1,010	1,012	-	1,012	0.2%
10- 51200- 133 Optical Insurance	56	80	80	160	155	160	-	160	3.2%
10- 51200- 134 Life Insurance	116	64	64	128	112	127	-	127	13.4%
10- 51200- 135 Pension	4,758	2,420	2,366	4,786	4,685	4,846	-	4,846	3.4%
10- 51200- 136 Disability Insurance	253	161	160	321	323	321	-	321	-0.6%
10- 51200- 220 Telephone	816	456	544	1,000	1,000	1,000	-	1,000	0.0%
10- 51200- 310 Office Supplies	1,602	850	1,140	1,990	2,000	2,000	-	2,000	0.0%
10- 51200- 311 Postage	1,866	737	1,150	1,887	2,000	2,000	-	2,000	0.0%
10- 51200- 320 Dues & Memberships	675	550	40	590	700	600	-	600	-14.3%
10- 51200- 321 Meetings	154	99	200	299	400	400	-	400	0.0%
10- 51200- 330 Mileage	222	-	100	100	200	200	-	200	0.0%
10- 51200- 345 Witness Fees	620	80	120	200	1,000	300	-	300	-70.0%
10- 51200- 349 Operating Expense	694	140	860	1,000	1,000	2,200	-	2,200	120.0%
10- 51200- 810 New Equipment	24,341	-	500	500	-	500	(500)	-	0.0%
Total Municipal Court	108,467	38,636	48,550	87,186	87,080	91,706	(733)	90,973	4.5%

CITY OF PEWAUKEE
2006 PROPOSED BUDGET
GENERAL FUND EXPENDITURES -DRAFT

	2004 Actual	2005			2006		Proposed		
		6 Month Actual	6 Month Estimate	Year End Forecast	2005 Budget	Department Request	Mayor's Modifications	2006 Budget	% Change
Clerk/Treasurer									
10- 51420- 110 Clerk/Treasurer	49,820	24,923	29,077	54,000	54,000	56,160	(540)	55,620	3.0%
10- 51420- 124 Full-Time	107,253	57,558	51,294	108,852	110,278	99,055	(515)	98,540	-10.6%
10- 51420- 125 Part-Time	11,240	7,364	8,337	15,701	27,406	20,838	-	20,838	-24.0%
10- 51420- 128 Overtime	1,121	467	450	917	1,500	1,500	-	1,500	0.0%
10- 51420- 130 Social Security	12,405	6,790	6,821	13,611	14,770	13,583	(80)	13,503	-8.6%
10- 51420- 131 Health Insurance	22,678	11,572	9,557	21,129	23,500	27,537	-	27,537	17.2%
10- 51420- 132 Dental Insurance	2,261	797	701	1,498	1,600	1,594	-	1,594	-0.4%
10- 51420- 133 Optical Insurance	115	274	226	500	540	547	-	547	1.3%
10- 51420- 134 Life Insurance	632	265	220	485	420	511	-	511	21.7%
10- 51420- 135 Pension	17,051	9,787	7,704	17,491	18,240	15,109	(98)	15,011	-17.7%
10- 51420- 136 Disability Insurance	1,404	624	574	1,198	1,180	1,261	-	1,261	6.9%
10- 51420- 214 Computer Exp/Training	-	-	-	-	-	-	-	-	#DIV/0!
10- 51420- 233 Equip Repair/Maintenance	-	1,152	1,200	2,352	2,000	5,880	-	5,880	194.0%
10- 51420- 310 Office Supplies and Expense	4,778	1,221	3,000	4,221	6,000	6,000	-	6,000	0.0%
10- 51420- 311 Postage	5,809	1,917	3,600	5,517	5,400	5,500	-	5,500	1.9%
10- 51420- 313 Notices and Publications	6,522	1,866	2,500	4,366	6,000	6,000	-	6,000	0.0%
10- 51420- 320 Dues and Memberships	587	335	155	490	500	500	-	500	0.0%
10- 51420- 321 Meetings and Conventions	221	133	100	233	550	550	-	550	0.0%
10- 51420- 322 Training	2,313	1,478	250	1,728	2,500	2,500	-	2,500	0.0%
10- 51420- 323 Subscriptions	219	122		122	160	250	-	250	56.3%
10- 51420- 330 Mileage	357	3	250	253	500	500	-	500	0.0%
10- 51420- 349 Misc. Operating Exp.	2,837	1,809	1,280	3,089	2,000	2,500	-	2,500	25.0%
10- 51420- 810 New Equipment	4,830	-	3,500	3,500	5,000	1,000	-	1,000	-80.0%
Total Clerk/Treasurer	254,453	130,457	130,796	261,253	284,044	268,875	(1,233)	267,642	-5.8%

CITY OF PEWAUKEE
 2006 PROPOSED BUDGET
 GENERAL FUND EXPENDITURES -DRAFT

	2004 Actual	2005			2006		Proposed		
		6 Month Actual	6 Month Estimate	Year End Forecast	2005 Budget	Department Request	Mayor's Modifications	2006 Budget	% Change
Elections									
10- 51440- 124	20,869	6,247	17,753	24,000	10,000	29,000	-	29,000	190.0%
10- 51440- 126	6,022	2,400	2,400	4,800	6,000	6,000	-	6,000	0.0%
10- 51440- 130	65	2	-	2	460	460	-	460	0.0%
10- 51440- 214		550	-	550	-	-	-	-	
10- 51440- 233	2,259	-	-	-	2,500	2,500	-	2,500	0.0%
10- 51440- 310	1,319	126	200	326	700	700	-	700	0.0%
10- 51440- 311	1,184	565	335	900	700	700	-	700	0.0%
10- 51440- 312	900	158	642	800	1,000	1,000	-	1,000	0.0%
10- 51440- 313	1,119	354	300	654	1,200	1,200	-	1,200	0.0%
10- 51440- 322	-	-	300	300	600	1,500	-	1,500	150.0%
10- 51440- 330	25	-	-	-	-	-	-	-	0.0%
10- 51440- 349	647	177	125	302	300	300	-	300	0.0%
10- 51440- 810	-	-	-	-	40,000	40,000	(40,000)	-	-100.0%
Total Elections	34,409	10,579	22,055	32,634	63,460	83,360	(40,000)	43,360	-31.7%
Board of Canvassers									
10- 51441- 141	100	-	100	100	240	120	-	120	-50.0%
Total Board of Canvassers	100	-	100	100	240	120	-	120	-50.0%
City Hall Operations									
10- 51600- 220	8,254	1,851	2,000	3,851	6,000	6,000	-	6,000	0.0%
10- 51600- 221	28,735	20,432	21,568	42,000	30,000	40,000	(5,000)	35,000	16.7%
10- 51600- 222	11,739	11,863	10,000	21,863	20,000	25,000	-	25,000	25.0%
10- 51600- 223	1,220	266	900	1,166	1,500	1,500	-	1,500	0.0%
10- 51600- 224	1,969	394	1,200	1,594	2,500	2,000	-	2,000	-20.0%
10- 51600- 230	16,284	12,590	12,600	25,190	30,000	30,000	-	30,000	0.0%
10- 51600- 231	11,585	2,315	4,685	7,000	9,000	12,000	-	12,000	33.3%
10- 51600- 232	3,140	2,023	2,477	4,500	5,000	5,000	-	5,000	0.0%
10- 51600- 233	1,602	-	1,000	1,000	3,000	3,000	-	3,000	0.0%
10- 51600-	-	-	-	-	-	1,500	-	1,500	NEW
10- 51600- 349	1,185	236	2,564	2,800	3,500	3,500	(1,500)	2,000	-42.9%
10- 51600- 810	-	-	-	-	-	-	-	-	0.0%
Total City Hall Operations	85,713	51,970	58,994	110,964	110,500	129,500	(6,500)	123,000	11.3%
Animal Control									

CITY OF PEWAUKEE
 2006 PROPOSED BUDGET
 GENERAL FUND EXPENDITURES -DRAFT

	2004 Actual	2005			2006		Proposed		
		6 Month Actual	6 Month Estimate	Year End Forecast	2005 Budget	Department Request	Mayor's Modifications	2006 Budget	% Change
10- 54150- 299 Other Contracted Services	6,699	6,699	-	6,699	7,000	7,000	-	7,000	0.0%
Total Animal Control	6,699	6,699	-	6,699	7,000	7,000	-	7,000	0.0%
Uncollectible Accounts									
10- 51910- 740 Delinquent Pers Prop Taxes	3,995	-	5,000	5,000	5,000	5,000	-	5,000	0.0%
10- 51910- 741 Rescinded Taxes	15,491	3,780	-	3,780	5,000	5,000	-	5,000	0.0%
10- 51910- 742 Uncollectible Accounts	-	-	-	-	-	-	-	-	0.0%
Total Uncollectible Accounts	19,486	3,780	5,000	8,780	10,000	10,000	-	10,000	0.0%
Total Clerk/Treasurer	400,860	203,485	216,945	420,430	475,244	498,855	(47,733)	451,122	-5.1%
Human Resources									
10- 51450- 125 Director (Part-time)	41,246	20,505	16,573	37,078	37,078	38,577	(371)	38,206	3.0%
10- 51450- 130 Social Security	3,155	1,569	1,271	2,840	2,840	2,951	(28)	2,923	2.9%
10- 51450- 135 Pension	4,531	2,401	1,679	4,080	4,080	4,243	(40)	4,203	3.0%
10- 51450- 313 Publications	-	-	-	-	500	-	-	-	-100.0%
10- 51450- 320 Dues & Memberships	1,193	-	1,193	1,193	1,200	1,200	-	1,200	0.0%
10- 51450- 321 Meetings/Conventions/Training	112	-	-	-	600	600	-	600	0.0%
10- 51450- 349 Operating Expenses	4,150	1,940	1,500	3,440	1,000	1,500	-	1,500	0.0%
10- 51450- 810 New Equipment	1,276	-	-	-	-	-	-	-	0.0%
Total Human Resources	55,663	26,415	22,216	48,631	47,298	49,071	(439)	48,632	2.8%

CITY OF PEWAUKEE
2006 PROPOSED BUDGET
GENERAL FUND EXPENDITURES -DRAFT

	2004 Actual	2005			2006		Proposed		
		6 Month Actual	6 Month Estimate	Year End Forecast	2005 Budget	Department Request	Mayor's Modifications	2006 Budget	% Change
Property Assessment									
10- 51530- 110 Assessor	51,387	25,846	30,154	56,000	56,000	57,680	-	57,680	3.0%
10- 51530- 121 Full-time Staff	25,773	28,902	36,098	65,000	68,000	76,203	-	76,203	12.1%
10- 51530- 124 Commercial - Building Inspector	-	-	-	-	4,000	-	-	-	New
10- 51530- 125 Part Time	22,949	-	-	-	-	1,200	-	1,200	New
10- 51530- 130 Social Security	7,670	4,188	5,068	9,256	9,800	10,335	-	10,335	5.5%
10- 51530- 131 Health Insurance	12,609	12,842	19,458	32,300	26,000	45,203	-	45,203	73.9%
10- 51530- 132 Dental Insurance	1,010	912	1,368	2,280	2,360	2,736	-	2,736	15.9%
10- 51530- 133 Optical Insurance	201	144	216	360	370	432	-	432	16.8%
10- 51530- 134 Life Insurance	170	56	214	270	300	427	-	427	42.3%
10- 51530- 135 Pension	(6,041)	-	1,244	1,244	2,090	14,275	-	14,727	604.6%
10- 51530- 136 Disability Insurance	383	319	454	773	850	907	-	907	6.7%
10- 51530- 137 Unemployment	7,187	179	-	179	-	-	-	-	0.0%
10- 51530- 218 Wis. Mfg. Assessor Charges	7,586	-	8,338	8,338	7,500	9,200	-	9,200	22.7%
10- 51530- 219 Other Professional Services	29,755	210	-	210	3,000	-	-	-	-100.0%
10- 51530- 220 Telephone	886	571	1,229	1,800	2,000	1,500	-	1,500	-25.0%
10- 51530- 234 Vehicle/Repairs Maint.	896	98	602	700	1,000	1,000	-	1,000	0.0%
10- 51530- 310 Office Supplies and Expense	1,412	902	598	1,500	2,000	3,500	-	3,500	75.0%
10- 51530- 311 Postage	1,151	961	200	1,161	1,500	3,700	-	3,700	146.7%
10- 51530- 320 Dues and Memberships	108	75	175	250	500	600	-	600	20.0%
10- 51530- 321 Meetings and Conventions	955	628	1,000	1,628	1,500	2,500	(500)	2,000	33.3%
10- 51530- 323 Subscriptions	1,159	152	425	577	1,000	1,600	(300)	1,300	30.0%
10- 51530- 324 License/Certification	125	69	-	69	150	150	-	150	0.0%
10- 51530- 330 Mileage Reimbursement	177	120	440	560	1,000	1,000	-	1,000	0.0%
10- 51530- 534 Cell phone/pagers	896	-	-	-	500	-	-	-	-100.0%
10- 51530- 810 New Equipment	7,439	-	-	-	-	-	-	-	0.0%
Assessor Capital Expenses									
10- 51530- 820 Capital Items	-	-	-	-	-	15,000	(15,000)	-	0.0%
Total Assessor	175,843	77,174	107,281	184,455	191,420	249,149	(15,800)	233,800	22.1%

CITY OF PEWAUKEE
 2006 PROPOSED BUDGET
 GENERAL FUND EXPENDITURES -DRAFT

	2004 Actual	2005			2006		Proposed		
		6 Month Actual	6 Month Estimate	Year End Forecast	2005 Budget	Department Request	Mayor's Modifications	2006 Budget	% Change
Information Technology									
10- 51460- 110 Director	-	25,385	29,615	55,000	55,000	57,200	(550)	56,650	3.0%
10- 51460- 130 Social Security	-	1,907	2,266	4,173	4,210	4,376	(42)	4,334	2.9%
10- 51460- 131 Health Insurance	-	6,505	6,505	13,010	13,200	15,068	-	15,068	14.2%
10- 51460- 132 Dental Insurance	-	456	456	912	910	912	-	912	0.2%
10- 51460- 133 Optical Insurance	-	72	72	144	140	144	-	144	2.9%
10- 51460- 134 Life Insurance	-	69	69	138	150	166	-	166	10.7%
10- 51460- 135 Pension	-	3,056	3,258	6,314	6,050	6,292	(60)	6,232	3.0%
10- 51460- 136 Disability Insurance	-	206	206	412	410	412	-	412	0.5%
10- 51460- 219 Outside Services	-	608	892	1,500	-	3,000	-	3,000	NEW
10- 51460- 225 Internet Access	2,607	1,115	1,466	2,581	2,580	7,000	(4,440)	2,560	-0.8%
10- 51460- 233 Equipment Repair & Maint	-	-	202	202	-	350	-	350	NEW
10- 51460- 245 Software/Maintenance/Updates	35,288	17,748	33,812	51,560	51,560	59,135	(8,495)	50,640	-1.8%
10- 51460- 290 Data Processing	27,775	9,723	22,277	32,000	35,000	50,000	(14,000)	36,000	2.9%
10- 51460- 291 WEB Site Maintenance	2,670	982	2,518	3,500	4,000	4,528	-	4,528	13.2%
10- 51460- 310 Office Supplies and Expense	-	70	108	178	150	150	-	150	0.0%
10- 51460- 320 Memberships	-	85	-	85	300	100	-	100	-66.7%
10- 51460- 321 Meetings/Conferences	-	-	150	150	150	450	-	450	200.0%
10- 51460- 323 Subscriptions	-	50	629	679	150	740	-	740	393.3%
10- 51460- 324 Training/Certifications	-	150	3,600	3,750	4,250	3,700	-	3,700	-12.9%
10- 51460- 330 Mileage	-	31	-	31	-	100	-	100	NEW
10- 51460- 349 Operating Supplies	-	-	500	500	-	800	-	800	NEW
10- 51460- 534 Cell phone/pagers	-	109	108	217	-	225	-	225	NEW
10- 51460- 810 New Equipment	25,750	11,322	14,478	25,800	25,800	59,550	(9,650)	49,900	93.4%
Total Operating Costs	94,090	79,649	123,187	202,836	204,010	274,398	(37,237)	237,161	16.2%
IT Capital Expenses									
10- 57160- 820 Capital Items	-	13,156	16,195	29,351	30,000	75,000	(43,000)	32,000	6.7%
Total IT	94,090	92,805	139,382	232,187	234,010	349,398	(80,237)	269,161	15.0%
Board of Review									
10- 51535- 130 Social Security	8	-	5	5	30	122	-	122	308.0%
10- 51535- 141 Meeting Fees	100	-	60	60	400	1,600	-	1,600	300.0%
10- 51535- 324 Training	-	-	60	60	-	150	-	150	NEW
Total Board of Review	108	-	125	125	430	1,872		1,872	335.4%

CITY OF PEWAUKEE
 2006 PROPOSED BUDGET
 GENERAL FUND EXPENDITURES -DRAFT

	2004 Actual	2005			2006		Proposed		
		6 Month Actual	6 Month Estimate	Year End Forecast	2005 Budget	Department Request	Mayor's Modifications	2006 Budget	% Change
Law Enforcement Police									
10- 52100- 110 Chief	60,701	28,080	32,760	60,840	60,840	64,004	(1,339)	62,665	3.0%
10- 52100- 112 Captain	-	32,539	37,962	70,501	70,500	74,519	(1,904)	72,615	3.0%
10- 52100- 113 Lieutenant	70,530	-	-	-	-	35,250	-	35,250	0.0%
10- 52100- 122 Sergeants	275,683	130,720	146,535	277,255	277,255	298,210	(2,189)	296,021	6.8%
10- 52100- 120 Detectives	115,645	82,561	96,256	178,817	178,817	186,076	-	186,076	4.1%
10- 52100- 123 Clerical	93,023	41,149	48,007	89,156	99,529	91,755	(1,642)	90,113	-9.5%
10- 52100- 124 Full-time Officers	740,432	355,796	415,095	770,891	818,691	864,766	(1,092)	863,674	5.5%
10- 52100- 125 Part-time Officers	117,704	55,320	64,540	119,860	158,971	162,628	(8,735)	153,893	-3.2%
10- 52100- 127 Part-time Cadets	16,951	12,290	7,710	20,000	13,112	13,636	(131)	13,505	3.0%
10- 52100- 128 Overtime	32,065	5,572	16,501	22,073	30,000	30,000	-	30,000	0.0%
10- 52100- 129 Training Wages	71,211	5,287	32,713	38,000	38,000	38,000	-	38,000	0.0%
10- 52100- 130 Social Security	119,679	56,706	69,672	126,378	133,453	144,132	(3,233)	140,899	5.6%
10- 52100- 131 Health Insurance	238,585	113,817	163,051	276,868	276,868	303,512	(2,511)	301,001	8.7%
10- 52100- 132 Dental Insurance	19,036	10,109	13,516	23,625	23,625	22,691	(152)	22,539	-4.6%
10- 52100- 133 Optical Insurance	2,207	1,949	2,340	4,289	4,289	4,420	(24)	4,396	2.5%
10- 52100- 134 Life Insurance	4,487	2,245	1,801	4,046	4,046	5,477	(30)	5,447	34.6%
10- 52100- 135 Pension	153,811	84,262	89,388	173,650	173,650	192,369	-	192,369	10.8%
10- 52100- 136 Disability Insurance	8,791	5,417	6,088	11,505	11,505	12,842	(78)	12,764	10.9%
10- 52100- 137 Unemployment Compensation	133	310	310	620	1,500	1,500	-	1,500	0.0%
10- 52100- 138 Spillman Training Wages	12,529	-	-	-	-	-	-	-	0.0%
10- 52100- 220 Telephone	7,592	3,739	5,261	9,000	9,000	9,000	-	9,000	0.0%
10- 52100- 233 Equipment Repairs & Maintenance	9,119	6,596	8,404	15,000	20,000	20,000	-	20,000	0.0%
10- 52100- 234 Vehicle Repairs & Maintenance	62,701	24,524	18,357	42,881	40,000	40,000	-	40,000	0.0%
10- 52100- 235 MDC & Airtime Fees	450	-	8,537	8,537	6,050	10,900	-	10,900	80.2%
10- 52100- 242 Suspension Fees	200	-	300	300	300	300	-	300	0.0%
10- 52100- 244 Legal Blood Testing	349	-	400	400	2,000	2,000	-	2,000	0.0%
10- 52100- 292 Dispatching	121,409	-	-	-	-	-	-	-	0.0%
10- 52100- 310 Office Supplies and Expense	7,235	3,747	4,253	8,000	8,000	8,000	-	8,000	0.0%
10- 52100- 311 Postage	2,683	1,135	1,365	2,500	2,500	2,500	-	2,500	0.0%
10- 52100- 312 Film & Developing	36	-	500	500	500	500	-	500	0.0%
10- 52100- 320 Dues and Memberships	1,020	1,010	340	1,350	1,000	1,200	-	1,200	20.0%

CITY OF PEWAUKEE
 2006 PROPOSED BUDGET
 GENERAL FUND EXPENDITURES -DRAFT

	2004 Actual	2005			2006		Proposed		
		6 Month Actual	6 Month Estimate	Year End Forecast	2005 Budget	Department Request	Mayor's Modifications	2006 Budget	% Change
10- 52100- 321 Meetings and Conventions	263	85	415	500	1,000	1,000	-	1,000	0.0%
10- 52100- 322 Training Materials	13,748	9,680	15,320	25,000	25,000	25,000	-	25,000	0.0%
10- 52100- 323 Subscriptions	186	195	55	250	500	500	-	500	0.0%
10- 52100- 330 Mileage	184	30	170	200	1,000	500	-	500	-50.0%
10- 52100- 341 Uniforms	22,583	14,901	7,099	22,000	22,000	23,500	-	23,500	6.8%
10- 52100- 342 Fuel	52,794	21,883	20,117	42,000	42,000	60,000	-	60,000	42.9%
10- 52100- 349 Operating Supplies	10,581	4,508	7,492	12,000	13,000	13,000	-	13,000	0.0%
10- 52100- 390 Equipment Purchases w/Donations	465	-	370	370	-	-	-	-	0.0%
10- 52100- 534 Cell Phone/Pagers	6,580	3,591	3,409	7,000	7,000	7,000	-	7,000	0.0%
10- 52100- 810 New Equipment	16,912	3,217	4,583	7,800	7,800	7,800	-	7,800	0.0%
10- 52700- 299 Confinement	5,306	2,069	6,931	9,000	3,990	4,000	-	4,000	0.3%
Total Operating Costs	2,495,599	1,125,039	1,357,923	2,482,962	2,587,291	2,782,488	(23,061)	2,759,427	6.7%
Police Capital Expenses									
10- 57200- 820 Capital Items	156,694	92,700	28,190	120,890	120,890	99,200	(29,200)	70,000	-42.1%
Total Police	2,652,293	1,217,739	1,386,113	2,603,852	2,708,181	2,881,688	(52,261)	2,829,427	4.5%

CITY OF PEWAUKEE
2006 PROPOSED BUDGET
GENERAL FUND EXPENDITURES -DRAFT

	2004 Actual	2005			2006		Proposed		
		6 Month Actual	6 Month Estimate	Year End Forecast	2005 Budget	Department Request	Mayor's Modifications	2006 Budget	% Change
Summer Lake Patrol									
10- 52110- 120 Chief	4,452	2,160	2,520	4,680	4,680	4,923	(103)	4,820	3.0%
10- 52110- 125 Part Time	20,482	3,548	24,817	28,365	28,365	29,500	(1,135)	28,365	0.0%
10- 52110- 126 Part Time Highway Wages	2,255	1,667	1,945	3,612	-	3,434	-	3,434	NEW
10- 52110- 129 Training Wages	8,410	5,279	6,159	11,438	5,000	5,000	-	5,000	0.0%
10- 52110- 130 Social Security	2,620	978	2,316	3,294	2,521	3,017	(478)	2,539	0.7%
10- 52110- 131 Health Insurance	572	312	312	624	636	762	-	762	19.8%
10- 52110- 132 Dental Insurance	33	27	27	54	55	55	-	55	0.0%
10- 52110- 133 Optical Insurance	7	4	4	8	8	9	-	9	12.5%
10- 52110- 134 Life Insurance	12	5	5	10	12	11	-	11	-8.3%
10- 52110- 135 Pension	448	256	787	1,043	505	1,073	(12)	1,061	110.1%
10- 52110- 136 Disability Insurance	28	16	16	32	34	35	-	35	2.9%
10- 52110- 233 Equipment Repairs & Maintenance	486	283	717	1,000	1,500	1,500	-	1,500	0.0%
10- 52110- 236 Boat Repairs & Maintenance	4,766	806	2,894	3,700	3,700	3,700	-	3,700	0.0%
10- 52110- 237 Buoy Repairs & Maintenance	4,705	4,754	-	4,754	3,000	3,000	-	3,000	0.0%
10- 52110- 322 Training	1,216	940	2,060	3,000	3,000	3,150	(150)	3,000	0.0%
10- 52110- 341 Uniforms	591	355	445	800	1,000	1,000	-	1,000	0.0%
10- 52110- 342 Gas and Oil	469	66	1,034	1,100	1,100	1,400	-	1,400	27.3%
10- 52110- 349 Operating Supplies/Expenses	1,694	458	542	1,000	1,800	1,800	(300)	1,500	-16.7%
10- 52110- 511 Workers Compensation	948	595	258	853	1,600	1,600	-	1,600	0.0%
10- 52110- 512 Property and Liability	1,333	1,201	261	1,462	1,500	1,500	-	1,500	0.0%
10- 52110- 810 New Equipment	1,546	-	2,600	2,600	2,600	2,600	-	2,600	0.0%
Summer Lake Patrol	57,073	23,710	49,719	73,429	62,616	69,068	(2,177)	66,891	6.8%
10- 57210- 820 Capital Expenses	8,667	-	-	-	-	-	-	-	
Total Summer Lake Patrol	65,740	23,710	49,719	73,429	62,616	69,068	(2,177)	66,891	6.8%

CITY OF PEWAUKEE
2006 PROPOSED BUDGET
GENERAL FUND EXPENDITURES -DRAFT

	2004 Actual	2005			2006		Proposed		
		6 Month Actual	6 Month Estimate	Year End Forecast	2005 Budget	Department Request	Mayor's Modifications	2006 Budget	% Change
Winter Lake Patrol									
10- 52120- 120 Chief	3,987	1,800	2,100	3,900	3,900	4,103	(86)	4,017	3.0%
10- 52120- 125 Part Time	5,761	6,446	2,418	8,864	4,120	4,285	(41)	4,244	3.0%
10- 52120- 126 Part Time Highway	1,048	286	334	620	-	600	(600)	-	0.0%
10- 52120- 129 Training	1,645	-	-	-	-	-	-	-	0.0%
10- 52120- 130 Social Security	869	631	346	977	613	642	(10)	632	3.1%
10- 52120- 131 Health Insurance	578	259	259	518	530	635	-	635	19.8%
10- 52120- 132 Dental Insurance	33	23	23	46	46	46	-	46	0.0%
10- 52120- 133 Optical Insurance	7	4	4	8	7	7	-	7	0.0%
10- 52120- 134 Life Insurance	7	6	6	12	10	9	-	9	-10.0%
10- 52120- 135 Pension	440	214	214	428	421	451	(9)	442	5.0%
10- 52120- 136 Disability Insurance	20	17	17	34	29	29	-	29	0.0%
10- 52120- 233 Equip Repairs & Maintenance	-	-	300	300	300	300	-	300	0.0%
10- 52120- 234 Vehicle Repairs & Maintenance	428	-	1,500	1,500	3,000	3,000	(1,000)	2,000	-33.3%
10- 52120- 322 Training	-	-	1,000	1,000	1,500	1,500	-	1,500	0.0%
10- 52120- 341 Uniforms	-	424	1,076	1,500	1,500	1,500	-	1,500	0.0%
10- 52120- 342 Gas and Oil	129	91	19	110	110	200	-	200	81.8%
10- 52120- 349 Operating Supplies	-	-	100	100	100	200	(100)	100	0.0%
10- 52120- 511 Workers Compensation	845	143	63	206	500	500	-	500	0.0%
10- 52120- 512 Property and Liability	786	679	173	852	1,000	1,000	-	1,000	0.0%
10- 52120- 810 New Equipment	2,406	955	45	1,000	1,000	1,000	-	1,000	0.0%
Winter Lake Patrol	18,989	11,978	9,997	21,975	18,686	20,007	(1,846)	18,161	
10- 57215- 820 Capital Expenses	-	-	-	-	-	-	-	-	
Total Winter Lake Patrol	18,989	11,978	9,997	21,975	18,686	20,007	(1,846)	18,161	
Total Law Enforcement	2,737,022	1,253,427	1,445,829	2,699,256	2,789,483	2,970,763	(56,284)	2,914,479	4.5%

CITY OF PEWAUKEE
 2006 PROPOSED BUDGET
 GENERAL FUND EXPENDITURES -DRAFT

	2004 Actual	2005			2006		Proposed		
		6 Month Actual	6 Month Estimate	Year End Forecast	2005 Budget	Department Request	Mayor's Modifications	2006 Budget	% Change
Fire & Ambulance Services									
Fire Administration									
10- 52210- 120 Chief	80,296	38,991	45,489	84,480	84,480	87,014	-	87,014	3.0%
10- 52210- 121 Assistant Chief	68,731	33,205	38,740	71,945	71,945	74,103	-	74,103	3.0%
10- 52210- 122 Administrative Assistant	32,278	15,370	17,931	33,301	33,301	34,300	-	34,300	3.0%
10- 52210- 130 Social Security	13,725	6,645	7,815	14,460	14,510	14,950	-	14,950	3.0%
10- 52210- 131 Health Insurance	28,704	15,159	15,159	30,318	30,700	35,117	-	35,117	14.4%
10- 52210- 132 Dental Insurance	1,809	1,056	1,054	2,110	2,110	2,112	-	2,112	0.1%
10- 52210- 133 Optical Insurance	238	216	204	420	420	432	-	432	2.9%
10- 52210- 134 Life Insurance	422	230	230	460	500	461	-	461	-7.8%
10- 52210- 135 Pension	19,773	10,394	10,466	20,860	20,860	21,496	-	21,496	3.0%
10- 52210- 136 Disability Insurance	1,098	695	695	1,390	1,420	1,389	-	1,389	-2.2%
10- 52210- 137 Unemployment	200	702	98	800	500	700	-	700	40.0%
10- 52210- 210 Fire Admin-Attorney	9,245	2,575	1,925	4,500	3,000	3,000	-	3,000	0.0%
10- 52210- 217 Billing Services Fire Runs	144	188	612	800	1,650	1,250	-	1,250	0.0%
10- 52210- 218 Billing Services EMS	22,149	8,215	17,300	25,515	25,515	26,000	-	26,000	1.9%
10- 52210- 219 Other Professional Services	192	-	-	-	2,500	-	-	-	0.0%
10- 52210- 220 Telephone	3,861	1,439	3,061	4,500	4,500	4,740	-	4,740	5.3%
10- 52210- Public Fire Protection Charge	-	-	-	-	-	450	-	450	NEW
10- 52210- 310 Office Supplies and Expenses	5,627	3,679	1,821	5,500	6,000	5,500	-	5,500	-8.3%
10- 52210- 311 Postage	667	241	346	587	800	700	-	700	-12.5%
10- 52210- 320 Memberships, Dues, Subscriptions	1,488	1,074	166	1,240	1,300	1,300	-	1,300	0.0%
10- 52210- 321 Meetings and Conventions	274	778	1,222	2,000	2,000	2,000	-	2,000	0.0%
10- 52210- 349 Operating Supplies/Expenses	500	813	2	815	250	100	-	100	-60.0%
10- 52290- 810 FireAct Fed Grant Exp & Homeland Sec	49,801	510	-	510	-	-	-	-	0.0%
10- 52210- 534 Cell Phones/Pagers	2,481	1,891	2,309	4,200	4,200	4,000	-	4,000	0.0%
10- 52210- 810 New Equipment	-	-	-	-	-	-	-	-	0.0%
Total Fire Administration	343,703	144,066	166,645	310,711	312,461	321,113	-	321,114	2.8%

CITY OF PEWAUKEE
 2006 PROPOSED BUDGET
 GENERAL FUND EXPENDITURES -DRAFT

	2004 Actual	2005			2006		Proposed		
		6 Month Actual	6 Month Estimate	Year End Forecast	2005 Budget	Department Request	Mayor's Modifications	2006 Budget	% Change
Fire and Rescue Facilities									
10- 52240- 220 Telephone	5,305	2,827	3,373	6,200	6,300	6,160	-	6,160	-2.2%
10- 52240- 221 Electricity	15,746	6,668	7,332	14,000	14,000	14,980	-	14,980	7.0%
10- 52240- 222 Heat	12,158	11,541	6,459	18,000	15,000	19,955	-	19,955	33.0%
10- 52240- 223 Water	2,893	868	1,482	2,350	2,500	2,500	-	2,500	0.0%
10- 52240- 224 Sewer	6,393	2,354	3,596	5,950	6,900	6,900	-	6,900	0.0%
10- 52240- 225 Station #1 Rental	18,865	-	-	-	-	-	-	-	0.0%
10- 52240- 231 Building Repairs & Maintenance	12,507	4,688	8,812	13,500	10,270	10,000	-	10,000	-2.6%
10- 52240- 232 Grounds Maintenance	1,697	594	606	1,200	3,000	1,000	-	1,000	-66.7%
10- 52240- 810 New Equipment	1,144	7,460	2,481	9,941	5,700	1,490	-	1,490	-73.9%
Total Fire and Rescue Facilities	76,708	37,000	34,141	71,141	63,670	62,985	-	62,985	-1.1%
Fire Prevention									
10- 52220- 121 Full-time Fire Prevention FF	48,045	20,929	24,417	45,346	50,120	41,406	-	41,406	-17%
10- 52220- 125 Part-time Fire Educator	1,632	314	1,872	2,186	3,200	1,600	-	1,600	-50%
10- 52220- 130 Social Security	3,690	1,525	2,005	3,530	4,070	3,290	-	3,290	-19%
10- 52220- 131 Health Insurance	15,519	5,896	6,486	12,382	13,200	3,736	-	3,736	-72%
10- 52220- 132 Dental Insurance	905	304	456	760	910	216	-	216	-76%
10- 52220- 133 Optical Insurance	171	48	72	120	140	108	-	108	-23%
10- 52220- 134 Life Insurance	171	82	87	169	130	130	-	130	0%
10- 52220- 135 Pension	1,199	2,135	3,375	5,510	5,510	380	(380)	-	-100%
10- 52220- 136 Disability Insurance	185	256	157	413	380	235	-	235	-38%
10- 52220- 320 Dues and Memberships	125	-	-	-	300	-	-	-	-100%
10- 52220- 321 Meetings & Conventions	-	-	-	-	200	-	-	-	-100%
10- 52220- 322 Training Expenses	-	-	200	200	200	-	-	-	-100%
10- 52220- 349 Operating Supplies	544	118	82	200	450	-	-	-	-100%
10- 52220- 810 New Equipment	-	-	-	-	-	-	-	-	0%
Total Fire Prevention	72,186	31,607	39,209	70,816	78,810	51,100	(380)	50,721	-36%

CITY OF PEWAUKEE
 2006 PROPOSED BUDGET
 GENERAL FUND EXPENDITURES -DRAFT

	2004 Actual	2005			2006		Proposed		
		6 Month Actual	6 Month Estimate	Year End Forecast	2005 Budget	Department Request	Mayor's Modifications	2006 Budget	% Change
Fire Suppression									
10- 52230- 121 Full Time Training Division Chief	59,581	28,479	33,226	61,705	61,705	63,556	-	63,556	3.0%
10- 52230- 124 7 Full time MPO/FF/EMT's	189,091	122,108	141,970	264,078	264,078	335,406	-	335,406	27.0%
10- 52230- 125 Part time	14,492	5,137	5,063	10,200	10,000	10,004	-	10,004	0.0%
10- 52230- 126 Training Wages - POC	27,673	9,944	17,056	27,000	27,000	24,390	-	24,390	-9.7%
10- 52230- 128 Overtime	3,631	1,118	1,382	2,500	3,060	3,402	-	3,402	0.0%
10- 52230- 130 Social Security	24,144	13,579	15,921	29,500	29,710	35,186	-	35,186	18.4%
10- 52230- 131 Health Insurance	32,935	23,508	20,142	43,650	58,800	61,880	-	61,880	5.2%
10- 52230- 132 Dental Insurance	2,965	1,868	1,944	3,812	4,210	4,800	-	4,800	14.0%
10- 52230- 133 Optical Insurance	100	492	504	996	940	1,152	-	1,152	22.6%
10- 52230- 134 Life Insurance	561	444	444	888	840	1,227	-	1,227	46.1%
10- 52230- 135 Pension	15,008	12,096	5,904	18,000	32,000	44,260	-	44,260	38.3%
10- 52230- 136 Disability Insurance	6,646	6,536	838	7,374	6,800	2,330	-	2,330	-65.7%
10- 52230- 190 Fire Runs	21,774	10,948	11,552	22,500	22,500	23,175	-	23,175	3.0%
10- 52230- 233 Equipment Repairs & Maintenance	8,245	5,295	1,005	6,300	4,000	4,160	-	4,160	4.0%
10- 52230- 234 Vehicle Repairs & Maintenance	21,722	11,537	10,963	22,500	20,000	20,000	(500)	19,500	-2.5%
10- 52230- 292 Dispatching	13,659	-	-	-	-	-	-	-	0.0%
10- 52230- 322 Training Expenses	3,058	1,455	5,430	6,885	6,885	6,256	-	6,256	-9.1%
10- 52230- 341 Uniforms	15,307	2,377	13,623	16,000	16,000	7,000	-	7,000	-56.3%
10- 52230- 342 Gas and Oil	12,500	8,050	5,975	14,025	12,000	14,500	(2,000)	12,500	4.2%
10- 52230- 349 Operating Supplies	4,988	2,300	2,700	5,000	5,000	5,000	-	5,000	0.0%
10- 52230- 511 Workmen's Comp Ins	13,829	8,237	6,163	14,400	14,000	14,400	-	14,400	2.9%
10- 52230- 512 Property/Liability Ins	15,735	14,623	2,780	17,403	16,000	19,300	-	19,300	20.6%
10- 52230- 810 New Equipment	3,172	114	2,886	3,000	6,020	5,305	-	5,305	-11.9%
Total Fire Suppression	510,816	290,245	307,471	597,716	621,548	706,689	(2,500)	704,189	13.3%

CITY OF PEWAUKEE
2006 PROPOSED BUDGET
GENERAL FUND EXPENDITURES -DRAFT

	2004 Actual	2005			2006		Proposed		
		6 Month Actual	6 Month Estimate	Year End Forecast	2005 Budget	Department Request	Mayor's Modifications	2006 Budget	% Change
Fire Inspection									
10- 52250- 121 FT FF/Inspector	48,964	23,132	26,988	50,120	50,120	50,120	-	50,120	0.0%
10- 52250- 121 Full-Time Pre. Division Chief	-	-	-	-	-	57,200	-	57,200	NEW
10- 52250- 124 Full time fire inspectors	35,958	18,605	23,933	42,538	42,538	-	-	-	-100.0%
10- 52250- 125 Part time fire inspectors	16,712	2,726	5,224	7,950	8,243	3,368	-	3,368	-59.1%
10- 52250- 130 Social Security	7,777	3,401	4,309	7,710	7,710	8,468	-	8,468	9.8%
10- 52250- 131 Health Insurance	13,864	13,010	12,972	25,982	26,400	18,804	-	18,804	-28.8%
10- 52250- 132 Dental Insurance	754	912	912	1,824	1,820	1,128	-	1,128	-38.0%
10- 52250- 133 Optical Insurance	144	144	144	288	280	252	-	252	-10.0%
10- 52250- 134 Life Insurance	170	79	161	240	240	225	(5)	220	-8.3%
10- 52250- 135 Pension	7,046	3,718	2,842	6,560	6,560	5,884	-	5,884	-10.3%
10- 52250- 136 Disability Insurance	364	400	380	780	780	798	(211)	587	-24.7%
10- 52250- 320 Dues and Memberships	235	50	150	200	200	-	-	-	-100.0%
10- 52250- 321 Meetings & Conventions	45	-	-	-	250	-	-	-	-100.0%
10- 52250- 322 Training Expenses	2,503	515	-	515	500	-	-	-	-100.0%
10- 52250- 349 Operating Supplies	1,044	83	1,417	1,500	1,500	1,000	-	1,000	-33.3%
10- 52250- 810 New Equipment	-	-	600	600	600	-	-	-	-100.0%
Total Fire Inspection	135,580	66,775	80,032	146,807	147,741	147,246	(216)	147,031	-0.5%
Fire Capital Expenses									
10- 57220- 820 Capital Expenses	-	181,627	-	181,627	184,000	236,000	-	236,000	0.0%
Hydrant Rental									
10- 52230- 533 Hydrant Rental	389,341	-	-	-	-	-	-	-	0.0%
Total Fire Services	1,528,334	751,320	627,498	1,378,818	1,408,230	1,525,134	(3,096)	1,522,040	8.1%

CITY OF PEWAUKEE
 2006 PROPOSED BUDGET
 GENERAL FUND EXPENDITURES -DRAFT

	2004 Actual	2005			2006		Proposed		
		6 Month Actual	6 Month Estimate	Year End Forecast	2005 Budget	Department Request	Mayor's Modifications	2006 Budget	% Change
Ambulance									
10- 52300- 121 FT EMS & Prevention Division Chiefs	60,352	28,479	33,226	61,705	61,705	63,556	-	63,556	10.0%
10- 52300- 126 Training Wages - POC	14,019	5,202	6,968	12,170	20,000	13,020	-	13,020	-34.9%
10- 52300- 130 Social Security	9,564	4,598	5,135	9,733	10,230	10,108	-	10,108	-1.2%
10- 52300- 131 Health Insurance	9,953	5,189	5,189	10,378	10,600	13,110	-	13,110	23.7%
10- 52300- 132 Dental Insurance	603	456	454	910	910	912	-	912	0.2%
10- 52300- 133 Optical Insurance	79	72	68	140	140	144	-	144	2.9%
10- 52300- 134 Life Insurance	169	92	68	160	160	184	-	184	15.0%
10- 52300- 135 Pension	6,582	3,386	3,404	6,790	6,790	6,991	-	6,991	3.0%
10- 52300- 136 Disability Insurance	304	231	229	460	460	463	-	463	0.7%
10- 52300- 191 Ambulance Runs	52,054	27,204	24,796	52,000	52,000	55,560	-	55,560	6.8%
10- 52300- 233 Equipment Repairs & Maintenance	3,994	2,547	653	3,200	3,900	3,200	-	3,200	-17.9%
10- 52300- 234 Vehicle Repairs & Maintenance	5,983	5,403	2,097	7,500	5,000	5,000	-	5,000	0.0%
10- 52300- 292 Dispatching	24,470	-	-	-	-	-	-	-	0.0%
10- 52300- 322 Training Expenses	7,459	1,316	7,184	8,500	15,480	13,300	(3,300)	10,000	-35.4%
10- 52300- 342 Gas and Oil	4,893	3,566	3,984	7,550	5,200	7,800	-	7,800	50.0%
10- 52300- 349 Operating Supplies	23,231	11,706	6,094	17,800	16,350	20,000	(3,000)	17,000	4.0%
10- 52300- 810 New Equipment	-	-	2,200	2,200	3,000	-	-	-	-100.0%
10- 52300- 811 EMS Grant Expenditures	5,921	-	-	-	-	-	-	-	0.0%
Total Ambulance Operations	229,630	99,447	101,749	201,196	211,925	213,348	(6,300)	207,048	-2.3%
Ambulance Capital Expenses									
10- 57230- 820 Capital Expenses	-	7,180	-	7,180	7,580	99,000	(99,000)	-	0.0%
Total Ambulance Services	229,630	106,627	101,749	208,376	219,505	312,348	(105,300)	207,048	-5.7%
Total Fire & Ambulance Services	1,757,964	857,947	729,246	1,587,193	1,627,735	1,837,482	(108,396)	1,729,088	6.2%

CITY OF PEWAUKEE
2006 PROPOSED BUDGET
GENERAL FUND EXPENDITURES -DRAFT

	2004 Actual	2005			2006		Proposed		
		6 Month Actual	6 Month Estimate	Year End Forecast	2005 Budget	Department Request	Mayor's Modifications	2006 Budget	% Change
Building Services									
10- 52400- 120 Department Supervisor	62,308	31,211	35,502	66,713	66,713	70,049	(1,335)	68,714	3.0%
10- 52400- 123 Clerical	26,619	15,371	17,627	32,998	32,998	33,730	-	33,730	2.2%
10- 52400- 125 Building Inspectors	82,009	36,601	48,741	85,342	85,342	99,554	(11,660)	87,894	3.0%
10- 52400- 130 Social Security	13,074	6,419	7,731	14,150	14,150	15,554	(992)	14,562	2.9%
10- 52400- 131 Health Insurance	25,602	13,661	13,439	27,100	27,100	32,103	0	32,103	18.5%
10- 52400- 132 Dental Insurance	1,719	1,157	1,203	2,360	2,360	2,386	0	2,386	1.1%
10- 52400- 133 Optical Insurance	191	220	240	460	460	475	(0)	475	3.3%
10- 52400- 134 Life Insurance	529	288	288	576	430	577	-	577	34.2%
10- 52400- 135 Pension	19,179	9,255	7,245	16,500	12,790	20,067	(758)	19,309	51.0%
10- 52400- 136 Disability Insurance	1,037	786	424	1,210	1,210	1,573	-	1,573	30.0%
10- 52400- 140 Auto Allowance	10,742	4,935	7,065	12,000	12,000	28,200	(6,600)	21,600	80.0%
10- 52400- 214 Computer Expenses/Training	1,044	3,128	-	3,128	800	800	-	800	0.0%
10- 52400- 220 Telephone	1,188	520	1,280	1,800	1,800	1,800	-	1,800	0.0%
10- 52400- 310 Office Supplies	1,409	209	1,591	1,800	1,800	1,800	-	1,800	0.0%
10- 52400- 311 Postage	1,217	476	524	1,000	1,000	1,000	-	1,000	0.0%
10- 52400- 320 Dues & Memberships	665	852	248	1,100	1,100	1,300	-	1,300	18.2%
10- 52400- 321 Meetings and Conventions	324	474	526	1,000	2,400	2,400	-	2,400	0.0%
10- 52400- 322 Training	1,604	1,010	2,190	3,200	3,200	3,200	-	3,200	0.0%
10- 52400- 323 Subscriptions	1,495	816	784	1,600	1,600	1,600	-	1,600	0.0%
10- 52400- 324 License/Certification	210	310	290	600	600	800	-	800	33.3%
10- 52400- 330 Mileage	-	228	372	600	-	2,400	(1,200)	1,200	0.0%
10- 52400- 349 Operating Supplies	4,100	4,415	1,785	6,200	5,200	5,200	-	5,200	0.0%
10- 52400- 534 Cell Phone/Pages	907	426	374	800	1,200	1,200	-	1,200	0.0%
10- 52400- 810 New Equipment	6,487	3,930	1,070	5,000	5,000	12,950	-	12,950	159.0%
Operating Expenses	263,659	136,698	150,539	287,237	281,253	340,718	(22,545)	318,173	13.1%
Capital Items									
10- 57240- 820 Building Services	18,695	-	-	-	-	12,700	(12,700)	-	
Total Building Services	282,354	136,698	150,539	287,237	281,253	353,418	(35,245)	318,173	13.1%

CITY OF PEWAUKEE
 2006 PROPOSED BUDGET
 GENERAL FUND EXPENDITURES -DRAFT

	2004 Actual	2005			2006		Proposed		
		6 Month Actual	6 Month Estimate	Year End Forecast	2005 Budget	Department Request	Mayor's Modifications	2006 Budget	% Change
Public Works Engineering									
10- 53110- 120 Public Works Dir./Engineer	84,681	40,246	46,954	87,200	87,200	90,688	(872)	89,816	3.0%
10- 53110- 121 Assistant City Engineer	62,462	29,769	22,000	51,769	64,500	64,812	-	64,812	0.5%
10- 53110- 122 Engineering Technichian	-	14,461	15,600	30,061	36,712	34,928	(312)	34,616	-5.7%
10- 53110- 123 Clerical	1,224	-	5,000	5,000	7,000	7,000	-	7,000	0.0%
10- 53110- 125 Engineering Student	2,377	-	-	-	5,000	5,000	-	5,000	0.0%
10- 53110- 129 Wages Charged Out	(11,993)	298	(5,000)	(4,702)	-	(10,000)	-	(10,000)	
10- 53110- 130 Social Security	13,604	6,006	3,543	9,549	15,330	14,951	(91)	14,860	-3.1%
10- 53110- 131 Health Insurance	25,489	13,010	13,010	26,020	36,300	30,135	-	30,135	-17.0%
10- 53110- 132 Dental Insurance	1,206	912	912	1,824	2,500	2,736	-	2,736	9.4%
10- 53110- 133 Optical Insurance	226	120	120	240	390	432	-	432	10.8%
10- 53110- 134 Life Insurance	338	184	184	368	470	512	-	512	8.9%
10- 53110- 135 Pension	14,937	8,845	4,450	13,295	16,690	15,210	(122)	15,088	-9.6%
10- 53110- 136 Disability Insurance	932	542	390	932	1,340	1,194	-	1,194	-10.9%
10- 53110- 219 Outside Engineering	62,796	5,186	20,000	25,186	20,000	20,000	-	20,000	0.0%
10- 53110- 234 Vehicle Expenses	52	92	200	292	500	500	-	500	0.0%
10- 53110- 310 Office Supplies	442	69	700	769	1,000	1,000	-	1,000	0.0%
10- 53110- 311 Postage	340	241	250	491	500	500	-	500	0.0%
10- 53110- 320 Dues & Memberships	342	711	-	711	950	950	-	950	0.0%
10- 53110- 321 Meetings & Conventions	155	-	-	-	200	200	-	200	0.0%
10- 53110- 322 Seminars and Training	184	156	75	231	2,000	2,000	-	2,000	0.0%
10- 53110- 323 Subscriptions/Ref./Prof. Org.	751	-	-	-	875	875	-	875	0.0%
10- 53110- 330 Mileage	35	-	200	200	200	200	-	200	0.0%
10- 53110- 349 Operating Supplies	167	582	2,214	2,796	1,200	1,200	-	1,200	0.0%
10- 53110- 534 Pager/Cell Phone	456	38	810	848	850	850	-	850	0.0%
10- 53110- 810 New Equipment	307	-	-	-	2,000	2,000	-	2,000	0.0%
Total Engineering	261,510	121,468	131,612	253,080	303,707	287,874	(1,397)	286,476	-5.7%
Capital Items									
10- 57240- 820 Engineering Services	-	-	-	-	-	-	-	-	0.0%
Total Engineering Services	261,510	121,468	131,612	253,080	303,707	287,874	(1,397)	286,476	-5.7%

CITY OF PEWAUKEE
 2006 PROPOSED BUDGET
 GENERAL FUND EXPENDITURES -DRAFT

	2004 Actual	2005			2006		Proposed		
		6 Month Actual	6 Month Estimate	Year End Forecast	2005 Budget	Department Request	Mayor's Modifications	2006 Budget	% Change
Safety Program									
10- 53120- 349 Personnel Protective Equipment	750	1,171	4,429	5,600	5,600	5,600	-	5,600	0.0%
10- 53120- Annual Examinations	-	-	-	-	-	4,500	(2,000)	2,500	NEW
10- 53120- 218 Training by Consultant	3,281	957	2,100	3,057	6,000	4,000	-	4,000	-33.3%
Total Safety Program	4,031	2,128	6,529	8,657	11,600	14,100	(2,000)	12,100	4.3%
Highway Administration									
10- 53100- 310 Office Supplies and Expenses	364	129	471	600	600	600	-	600	0.0%
10- 53100- 321 Meetings and Conventions	130	65	135	200	350	200	-	200	-42.9%
10- 53100- 324 License/Certifications	31	172	200	372	800	1,000	-	1,000	25.0%
10- 53100- 534 Pager and Cellular Phone	2,306	1,470	1,530	3,000	3,000	3,000	-	3,000	0.0%
10- 53100- 810 New Equipment	130	-	1,500	1,500	1,500	1,500	-	1,500	0.0%
Total Highway Administration	2,961	1,836	3,836	5,672	6,250	6,300	-	6,300	0.8%
Machinery Maintenance									
10- 53240- 124 Full Time	42,646	20,371	23,766	44,137	43,160	46,072	-	46,072	6.7%
10- 53240- 128 Overtime	244	2,284	800	3,084	2,000	3,323	-	3,323	66.2%
10- 53240- 129 Wages Charged Out to Other depts	(29,071)	(14,445)	(14,000)	(28,445)	(20,000)	(28,000)	-	(28,000)	40.0%
10- 53240- 130 Social Security	3,180	1,714	1,714	3,428	3,610	3,779	-	3,779	4.7%
10- 53240- 131 Health Insurance	12,868	6,505	6,505	13,010	13,200	15,068	-	15,068	14.2%
10- 53240- 132 Dental Insurance	603	456	454	910	910	912	-	912	0.2%
10- 53240- 133 Optical Insurance	114	72	68	140	140	144	-	144	2.9%
10- 53240- 134 Life Insurance	234	70	40	110	110	140	-	140	27.3%
10- 53240- 135 Pension	5,001	2,669	2,521	5,190	5,190	5,068	-	5,068	-2.4%
10- 53240- 136 Disability Insurance	519	166	154	320	320	331	-	331	3.4%
10- 53240- 233 Equipment Repairs & Maintenance	23,694	9,645	15,355	25,000	25,000	25,000	-	25,000	0.0%
10- 53240- 342 Gas and Oil	19,992	7,745	13,255	21,000	21,000	29,000	-	29,000	38.1%
10- 53240- 349 Operating Supplies	11,261	4,127	7,873	12,000	12,000	12,000	-	12,000	0.0%
10- 53240- 531 Equipment Rental	-	200	200	400	400	400	-	400	0.0%
10- 53240- 810 New Equipment	1,662	500	3,000	3,500	3,500	3,500	-	3,500	0.0%
Total Highway Machinery Maintenance	92,947	42,079	61,705	103,784	110,540	116,737	-	116,737	5.6%

CITY OF PEWAUKEE
2006 PROPOSED BUDGET
GENERAL FUND EXPENDITURES -DRAFT

	2004 Actual	2005			2006		Proposed		
		6 Month Actual	6 Month Estimate	Year End Forecast	2005 Budget	Department Request	Mayor's Modifications	2006 Budget	% Change
Road Repairs and Maintenance									
10- 53311- 120 Highway Superintendent	55,002	24,907	30,192	55,099	55,099	57,303	(551)	56,752	3.0%
10- 53311- 121 Highway Assistant	51,115	8,966	500	9,466	51,022	-	-	-	-100.0%
10- 53311- 124 Full Time	125,261	59,471	82,982	142,453	126,546	179,865	(985)	178,880	41.4%
10- 53311- 125 Part Time	6,622	5,093	3,407	8,500	8,500	8,500	-	8,500	0.0%
10- 53311- 128 Overtime	3,372	15,682	5,300	20,982	21,000	25,000	-	25,000	19.0%
10- 53311- 129 Charges to Other Departments	(9,071)	(4,040)	(4,000)	(8,040)	(5,000)	(5,000)	-	(5,000)	0.0%
10- 53311- 130 Social Security	18,288	8,637	8,637	17,274	20,070	20,708	(119)	20,589	2.6%
10- 53311- 131 Health Insurance	51,225	26,105	26,105	52,210	50,200	76,984	-	76,984	53.4%
10- 53311- 132 Dental Insurance	2,412	1,596	1,596	3,192	3,640	4,560	-	4,560	25.3%
10- 53311- 133 Optical Insurance	454	312	312	624	700	720	-	720	2.9%
10- 53311- 134 Life Insurance	675	301	301	602	670	719	-	719	7.3%
10- 53311- 135 Pension	26,898	12,454	12,454	24,908	27,900	24,682	(114)	24,568	-11.9%
10- 53311- 136 Disability Insurance	1,389	717	717	1,434	1,750	1,742	-	1,742	-0.5%
10- 53311- 241 Crack Filling	9,980	-	11,500	11,500	12,000	12,000	-	12,000	0.0%
10- 53311- 291 Excess Excavated Materials	-	-	2,000	2,000	5,000	2,000	-	2,000	-60.0%
10- 53311- 341 Uniforms	2,290	645	3,000	3,645	4,000	4,000	-	4,000	0.0%
10- 53311- 349 Operating Supplies	2,042	292	1,708	2,000	2,000	2,000	-	2,000	0.0%
10- 53311- 370 Resale Materials	2,835	1,473	2,027	3,500	3,500	3,500	-	3,500	0.0%
10- 53311- 371 Sand and Salt	66,161	68,511	12,640	81,151	75,000	85,000	-	85,000	13.3%
10- 53311- 372 Road Signs and Markings	21,767	2,207	15,793	18,000	18,000	24,000	-	24,000	33.3%
10- 53311- 373 Road Repairs	6,067	903	15,097	16,000	16,000	15,000	-	15,000	-6.3%
10- 53311- 374 Catch Basin/Curb Repair/Ditching	24,157	-	15,000	15,000	25,000	20,000	-	20,000	-20.0%
10- 53311- 379 Other Roadway Supplies	574	246	1,754	2,000	2,000	2,000	-	2,000	0.0%
10- 53311- 531 Equipment Rental	4,115	4,505	10,495	15,000	15,000	15,000	-	15,000	0.0%
Total Highway Maintenance	473,630	238,983	259,517	498,500	539,597	580,282	(1,769)	578,514	7.2%
Street Lighting									
10- 53420- 221 Electricity	6,910	2,943	4,000	6,943	7,000	7,500	-	7,500	7.1%
Total Street Lighting	6,910	2,943	4,000	6,943	7,000	7,500	-	7,500	7.1%
Capital Items:									
10- 57331- 820 Highway Equipment	111,721	4,825	53,675	58,500	58,500	282,000	(162,000)	120,000	105.1%
Total Highway	688,169	290,666	382,733	673,399	721,887	992,818	(163,769)	829,051	14.8%

CITY OF PEWAUKEE
 2006 PROPOSED BUDGET
 GENERAL FUND EXPENDITURES -DRAFT

	2004 Actual	2005			2006		Proposed		
		6 Month Actual	6 Month Estimate	Year End Forecast	2005 Budget	Department Request	Mayor's Modifications	2006 Budget	% Change
Refuse Collection and Recycling									
10- 53630- 125 Part Time	4,324	2,708	3,292	6,000	6,000	9,880	-	9,880	64.7%
10- 53630- 126 Part Time - Highway	6,756	2,923	4,077	7,000	3,000	6,000	-	6,000	100.0%
10- 53630- 130 Social Security	331	207	483	690	690	756	-	756	9.6%
10- 53630- 280 Garbage Collection	553,237	235,387	330,113	565,500	565,500	591,850	-	591,850	4.7%
10- 53630- 310 Office Supplies	-	-	100	100	100	100	-	100	0.0%
10- 53630- 349 Operating Supplies and Expenses/Hauling Recyclables	16,345	2,866	17,134	20,000	30,000	20,000	-	20,000	-33.3%
Total Garbage Collection and Recycling	580,993	244,091	355,199	599,290	605,290	628,586	-	628,586	3.8%
Boat Ramp									
10- 55460- 236 Launch maintenance	472	129	150	279	1,500	500	-	500	-66.7%
Total Public Works	1,535,175	658,482	876,223	1,534,705	1,643,984	1,923,879	(167,166)	1,756,713	6.9%

CITY OF PEWAUKEE
 2006 PROPOSED BUDGET
 GENERAL FUND EXPENDITURES -DRAFT

	2004 Actual	2005			2006		Proposed		
		6 Month Actual	6 Month Estimate	Year End Forecast	2005 Budget	Department Request	Mayor's Modifications	2006 Budget	% Change
Weed and Insect Control									
Lake Management									
10- 53640- 121 Supervisor	-	2,564	2,564	5,128	5,460	5,408	-	5,408	-1.0%
10- 53640- 124 Foreman/Laborer	-	17,798	20,765	38,563	38,563	40,106	(386)	39,720	3.0%
10- 53640- 125 Part-time wages	19,559	3,940	37,020	40,960	40,960	50,996	(18,196)	32,800	-19.9%
10- 53640- 126 Part-time HWY Labor	311	69	730	799	-	500	-	500	
10- 53640- 128 Overtime	169	896	5,104	6,000	-	3,000	-	3,000	
10- 53640- 130 Social Security	1,601	2,053	4,427	6,480	6,480	7,386	(1,193)	6,193	-4.4%
10- 53640- 131 Health Insurance	-	3,617	6,283	9,900	9,900	15,935	-	15,935	61.0%
10- 53640- 132 Dental Insurance	-	274	406	680	680	1,003	-	1,003	47.5%
10- 53640- 133 Optical Insurance	-	43	67	110	110	158	-	158	43.6%
10- 53640- 134 Life Insurance	-	8	82	90	90	160	-	160	77.8%
10- 53640- 135 Pension	-	346	2,054	2,400	-	5,337	(43)	5,294	
10- 53640- 136 Disability Insurance	-	93	167	260	260	342	-	342	31.5%
10- 53640- 232 Ground Maintenance	7,155	2,815	500	3,315	2,500	500	-	500	-80.0%
10- 53640- 233 Equipment Repairs	7,512	4,834	2,989	7,823	2,300	4,800	-	4,800	108.7%
10- 53640- 234 Vehicle Repairs	507	132	1,436	1,568	500	500	-	500	0.0%
10- 53640- 280 LPSD Lake Management	76,600	-	-	-	-	-	-	-	0.0%
10- 53640- 322 Training/CDL Licensing	-	-	100	100	300	300	-	300	0.0%
10- 53640- 324 Herbicide/Mechanical Permits	-	300	-	300	1,600	1,600	-	1,600	0.0%
10- 53640- 341 Uniforms	251	-	449	449	700	700	-	700	0.0%
10- 53640- 342 Gas & Oil	572	4,064	3,000	7,064	6,000	7,500	-	7,500	25.0%
10- 53640- 348 Safety Equipment	203	-	500	500	500	500	-	500	0.0%
10- 53640- 349 Supplies	-	123	-	123	-	-	-	-	0.0%
10- 53640- 531 Equipment Rental/Lease	-	-	-	-	3,000	-	-	-	-100.0%
10- 53640- 534 Telephone	1,073	435	1,321	1,756	1,100	1,300	-	1,300	18.2%
10- 53640- 600 Chemical Application	-	-	-	-	-	-	-	-	0.0%
10- 53640- 610 Survey	-	-	-	-	4,000	-	-	-	-100.0%
10- 53640- 810 New Equipment	5,556	158	4,464	4,622	800	800	-	800	0.0%
Lake Management operations	121,069	44,562	94,428	138,990	125,803	148,831	(19,818)	129,013	2.6%
Capital Items:									
10- 57364- 820 Capital Expenditures Lake Mang.	155,239	-	130,000	130,000	130,000	276,795	(251,795)	25,000	-80.8%

CITY OF PEWAUKEE
 2006 PROPOSED BUDGET
 GENERAL FUND EXPENDITURES -DRAFT

	2004 Actual	2005			2006		Proposed		
		6 Month Actual	6 Month Estimate	Year End Forecast	2005 Budget	Department Request	Mayor's Modifications	2006 Budget	% Change
Insect Control									
10- 54100- 298 Gypsy Moth Control	-	-	-	-	-	-	-	-	0.0%
Total Lake Weed & Insect Control	276,308	44,562	224,428	268,990	255,803	425,626	(271,613)	154,013	-39.8%
Weed Control - Vacant Lands									
10- 53641- 299 Other Contracted Services	2,260	-	500	500	1,000	500	-	500	-50.0%
10- 53641- 349 Supplies	-	-	100	100	300	100	-	100	-66.7%
Weed Control Vacant Land	2,260	-	600	600	1,300	600	-	600	-117%
Culture & Recreation									
Joint Library									
10- 55110- 290 Operating Expenses	-	-	220,414	220,414	220,414	647,780	(13,478)	634,302	187.8%
10- 55110- 291 Building, Materials, & Startup Costs	1,000,000	103,705	396,295	500,000	500,000	-	-	-	0.0%
Total Joint Library	1,000,000	103,705	616,709	720,414	720,414	647,780	(13,478)	634,302	-12.0%

CITY OF PEWAUKEE
 2006 PROPOSED BUDGET
 GENERAL FUND EXPENDITURES -DRAFT

	2004 Actual	2005			2006		Proposed		
		6 Month Actual	6 Month Estimate	Year End Forecast	2005 Budget	Department Request	Mayor's Modifications	2006 Budget	% Change
Parks									
10- 55200- 121 Park Supervisor	49,043	21,152	22,933	44,085	48,984	54,080	-	54,080	10.4%
10- 55200- 121 Less Charged to Lake Weed Supervisor		-	(5,200)	(5,200)	(5,200)	(5,408)	-	(5,408)	4.0%
10- 55200- 124 Park Foreman	38,589	19,590	24,672	44,262	44,262	46,738	-	46,738	5.6%
10- 55200- 125 Part Time Labor	76,730	27,282	42,005	69,287	69,287	65,980	(167)	65,813	-5.0%
10- 55200- 126 Highway Dept Labor	3,786	1,348	1,652	3,000	4,000	4,000	-	4,000	0.0%
10- 55200- 128 Overtime	8,829	4,995	4,106	9,101	8,100	8,100	-	8,100	0.0%
10- 55200- 129 Charges to Other Departments	(11,138)	(6,341)	(5,659)	(12,000)	(12,000)	(12,000)	-	(12,000)	0.0%
10- 55200- 130 Social Security	13,445	5,433	7,627	13,060	13,060	12,966	(13)	12,953	-0.8%
10- 55200- 131 Health Insurance	18,583	8,471	15,329	23,800	23,800	23,609	-	23,609	-0.8%
10- 55200- 132 Dental Insurance	1,420	866	1,684	2,550	2,550	1,963	-	1,963	-23.0%
10- 55200- 133 Optical Insurance	77	137	263	400	400	389	-	389	-2.8%
10- 55200- 134 Life Insurance	274	145	175	320	320	433	-	433	35.3%
10- 55200- 135 Pension	11,093	5,979	7,441	13,420	13,420	13,290	(19)	13,271	-1.1%
10- 55200- 136 Disability Insurance	617	349	501	850	850	1,167	-	1,167	37.3%
10- 55200- 137 Unemployment	4,431	2,794	-	2,794	2,000	2,500	-	2,500	25.0%
10- 55200- 141 Commissioners Fees	440	-	1,000	1,000	1,000	1,000	-	1,000	0.0%
10- 55200- 211 Engineering	-	-	500	500	500	500	-	500	0.0%
10- 55200- 213 Accounting Assistance	196	-	500	500	500	500	-	500	0.0%
10- 55200- 221 Electricity	11,973	5,707	5,293	11,000	11,000	11,000	-	11,000	0.0%
10- 55200- 222 Heat	6,033	5,509	1,991	7,500	7,000	7,500	-	7,500	7.1%
10- 55200- 223 Water	1,215	434	1,766	2,200	2,200	2,200	-	2,200	0.0%
10- 55200- 224 Sewer	2,043	486	1,714	2,200	2,200	2,200	-	2,200	0.0%
10- 55200- 231 Building Repairs & Maintenance	17,810	12,664	9,336	22,000	22,000	22,000	(1,800)	20,200	-8.2%
10- 55200- 232 Grounds Maintenance	48,382	29,998	17,002	47,000	47,000	47,000	(1,900)	45,100	-4.0%
10- 55200- 233 Equipment Repairs & Maintenance	7,259	1,926	4,074	6,000	6,000	6,000	-	6,000	0.0%
10- 55200- 234 Vehicle Repairs & Maintenance	3,959	944	3,056	4,000	4,000	4,000	-	4,000	0.0%
10- 55200- Public Fire Protection Charge	-	-	-	-	-	300	-	300	NEW
10- 55200- 310 Office supplies & Exp.	-	57	-	57	-	3,200	(1,600)	1,600	NEW
10- 55200- 322 Training	-	90	500	590	700	700	-	700	0.0%
10- 55200- 341 Uniforms	2,476	309	1,191	1,500	1,000	1,500	-	1,500	50.0%
10- 55200- 342 Gas and Oil	10,355	7,783	7,217	15,000	9,500	15,000	(2,250)	12,750	34.2%
10- 55200- 348 Safety Equipment	848	642	358	1,000	1,000	1,000	-	1,000	0.0%

CITY OF PEWAUKEE
 2006 PROPOSED BUDGET
 GENERAL FUND EXPENDITURES -DRAFT

	2004 Actual	2005			2006		Proposed		
		6 Month Actual	6 Month Estimate	Year End Forecast	2005 Budget	Department Request	Mayor's Modifications	2006 Budget	% Change
10- 55200- 349 Operating & Office Supplies & Postage	1,002	322	678	1,000	1,000	1,000	-	1,000	0.0%
10- 55200- 531 Equipment Rental	189	513	1,487	2,000	2,000	2,000	-	2,000	0.0%
10- 55200- 534 Cell Phones and Pagers	3,216	921	1,579	2,500	2,500	2,500	-	2,500	0.0%
10- 55200- 743 Vandalism	3,428	186	1,314	1,500	1,500	1,500	-	1,500	0.0%
10- 55200- 810 New Equipment	11,915	10,832	5,928	16,760	16,760	16,815	(1,940)	14,875	-11.2%
Total Parks	348,518	171,523	184,013	355,536	353,193	367,222	(9,689)	357,533	1.2%
Recreation Programs									
10- 55300- 120 Director (3/4 time to Full-Time)	39,134	20,849	24,324	45,173	45,173	55,000	-	55,000	21.8%
10- 55300- 121 Recreation Supervisor	24,861	11,681	13,627	25,308	25,308	29,244	-	29,244	15.6%
10- 55300- 123 Office Assistant	11,325	8,288	4,938	13,226	13,226	13,755	(132)	13,623	3.0%
10- 55300- 125 Leaders	93,972	24,327	82,793	107,120	107,120	111,405	(1,071)	110,334	3.0%
10- 55300- 128 Overtime	-	-	-	-	250	260	(2)	258	3.2%
10- 55300- 130 Social Security	12,491	4,696	9,934	14,630	14,630	16,039	(91)	15,948	9.0%
10- 55300- 131 Health Insurance	15,705	8,411	8,389	16,800	16,800	17,729	-	17,729	5.5%
10- 55300- 132 Dental Insurance	932	638	462	1,100	870	1,201	-	1,201	38.0%
10- 55300- 133 Optical Insurance	106	101	109	210	210	190	-	190	-9.5%
10- 55300- 134 Life Insurance	219	122	88	210	190	188	-	188	-1.1%
10- 55300- 135 Pension	6,688	3,868	3,882	7,750	7,750	3,721	-	3,721	-52.0%
10- 55300- 136 Disability Insurance	422	315	215	530	530	507	-	507	-4.3%
10- 55300- 219 Contracted Services	10,538	9,829	4,414	14,243	12,400	17,000	(4,000)	13,000	4.8%
10- 55300- 220 Telephone	5,544	1,752	4,248	6,000	8,500	8,500	-	8,500	0.0%
10- 55300- 310 Office Supplies	2,832	1,082	1,918	3,000	3,000	3,000	-	3,000	0.0%
10- 55300- 311 Postage	4,180	869	2,131	3,000	3,000	3,000	-	3,000	0.0%
10- 55300- 312 Program, Printing & Mailing	19,162	9,533	7,967	17,500	17,500	17,500	-	17,500	0.0%
10- 55300- 313 Notices and Publications	447	75	425	500	500	500	-	500	0.0%
10- 55300- 321 Meetings and Conventions	1,200	-	1,600	1,600	1,600	1,000	-	1,000	-37.5%
10- 55300- 322 Training	155	341	100	441	900	500	-	500	-44.4%
10- 55300- 330 Mileage - Leaders	827	-	1,500	1,500	2,000	2,000	-	2,000	0.0%
10- 55300- 341 Uniforms	4,649	1,283	3,717	5,000	5,000	5,000	-	5,000	0.0%
10- 55300- 343 Program Expenses	16,932	7,538	7,462	15,000	15,000	16,000	-	16,000	6.7%
10- 55300- 349 Program Equipment	4,765	266	4,104	4,370	4,000	3,000	-	3,000	-25.0%
10- 55300- 511 Workmen's Comp Ins	4,849	4,596	5,404	10,000	10,000	10,000	-	10,000	0.0%
10- 55300- 512 Prop/Liability Ins	8,930	9,095	1,043	10,138	6,000	10,000	-	10,000	66.7%

CITY OF PEWAUKEE
 2006 PROPOSED BUDGET
 GENERAL FUND EXPENDITURES -DRAFT

	2004 Actual	2005			2006		Proposed		
		6 Month Actual	6 Month Estimate	Year End Forecast	2005 Budget	Department Request	Mayor's Modifications	2006 Budget	% Change
10- 55300- 710 Field Trips	26,674	6,491	19,569	26,060	25,000	19,000	-	19,000	-24.0%
10- 55300- 711 WPRA Tickets	-	-	-	-	-	10,000	-	10,000	NEW
10- 55300- 810 New Equipment	667	975	(975)	-	-	-	-	-	-
Shared Recreation Programs	318,206	137,021	213,388	350,409	346,457	375,238	(5,296)	369,943	6.8%
Non-Shared Recreation Programs									
10- 55310- 125 Leaders	2,549	-	-	-	-	-	-	-	-
10- 55310- 128 Social Security	195	-	-	-	-	-	-	-	-
Non-Shared Recreation Programs	2,744	-	-	-	-	-	-	-	-

CITY OF PEWAUKEE
 2006 PROPOSED BUDGET
 GENERAL FUND EXPENDITURES -DRAFT

	2004 Actual	2005			2006		Proposed		
		6 Month Actual	6 Month Estimate	Year End Forecast	2005 Budget	Department Request	Mayor's Modifications	2006 Budget	% Change
Land O' Leagues Program									
10- 55320- 120 Administrator	13,230	5,765	7,862	13,627	13,627	15,747	-	15,747	
10- 55320- 121 Assistant	3,598	877	-	877	5,503	5,723	(55)	5,668	
10- 55320- 130 Social Security	1,288	508	281	789	1,460	1,643	(4)	1,639	
10- 55320- 131 Health Insurance	1,150	1,787	1,913	3,700	3,700	4,137	-	4,137	
10- 55320- 132 Dental Insurance	211	160	140	300	-	319	-	319	
10- 55320- 133 Optical Insurance	42	25	30	55	-	50	-	50	
10- 55320- 134 Life Insurance	48	24	26	50	40	48	-	48	
10- 55320- 135 Pension	1,508	748	752	1,500	1,500	1,732	-	1,732	
10- 55320- 136 Disability Insurance	70	-	100	100	100	102	-	102	
10- 55320- 311 Postage	68	-	1,300	1,300	1,300	700	-	700	
10- 55320- 312 Printing	919	-	-	-	300	-	-	-	
10- 55320- 313 Books, Pub.,	-	33	467	500	1,200	1,000	-	1,000	
10- 55320- 313 Copy Charges	-	-	-	-	300	-	-	-	
10- 55320- 343 Recreation Services	18,771	1,260	19,960	21,220	21,220	21,290	-	21,290	
10- 55320- 349 Office Supplies	988	-	300	300	300	600	-	600	
10- 55320- 350 Misc. Supplies	-	1,569	1,076	2,645	2,300	2,000	-	2,000	
10- 55320- 511 Worker's Compensation	391	491	142	633	60	920	-	920	
Total Land O' Leagues	42,282	13,247	34,349	47,596	52,910	56,012	(59)	55,952	5.7%
Capital Items									
10- 57620- 820 Parks	27,772	27,687	29,215	56,902	80,993	100,390	(29,390)	71,000	-12.3%
Total Parks & Recreation	739,522	349,478	460,965	810,443	833,553	898,862	(44,434)	854,428	2.5%
Total General Fund	9,904,031	4,190,754	5,326,399	9,517,153	9,993,407	11,091,392	(882,770)	10,209,075	2.16%

CITY OF PEWAUKEE
FIVE YEAR CAPITAL BUDGET
2006 PROPOSED BUDGET
CAPITAL ASSETS COSTING \$5,000 OR MORE

SUMMARY

DIVISION #	DIVISION DESCRIPTION	2005 Approved	2006 Dept Request	2006 Budget	2007 Budget	2008 Budget	2009 Budget	2010 Budget	2006-10 Total	COMMENTS
DIVISION: 10	ADMINISTRATION	0	0	0	0	0	0	0	0	
DIVISION: 30	PROPERTY ASSESSMENT	0	15,000	0	15,000	7,500	5,000	7,500	35,000	
DIVISION: 42	FINANCE/ELECTIONS & IT	30,000	75,000	32,000	11,500	18,000	25,000	5,000	91,500	
DIVISION: 50	POLICE	165,900	99,200	70,000	95,000	98,000	112,000	112,000	487,000	
DIVISION: 50	SUMMER LAKE PATROL	8,000	0	0	0	0	0	0	0	
DIVISION: 50	WINTER LAKE PATROL	0	0	0	0	0	0	0	0	
DIVISION: 60	FIRE PROTECTION	0	236,000	236,000	132,590	67,465	117,280	12,890	566,225	
DIVISION: 60	AMBULANCE AND RESCUE	0	99,000	0	174,000	52,000	105,000	105,000	436,000	
DIVISION: 70	BUILDING SERVICES	14,300	12,700	0	0	0	0	0	0	
DIVISION: 80	HIGHWAY OPERATIONS	110,000	282,000	120,000	624,000	387,000	145,000	255,000	1,531,000	
DIVISION: 80	ENGINEERING	0	0	0	0	0	0	0	0	
DIVISION:	LAKE MANAGEMENT	0	276,795	25,000	251,795	0	0	0	276,795	
DIVISION: 90	PARKS & RECREATION	49,000	106,000	71,000	233,000	154,500	11,000	0	469,500	
Total Financed Through Tax Levy		357,200	1,201,695	554,000	1,536,885	784,465	520,280	497,390	3,893,020	

CITY OF PEWAUKEE
FIVE YEAR CAPITAL BUDGET
2006 PROPOSED BUDGET
CAPITAL ASSETS COSTING \$5,000 OR MORE

DIVISION: 10 ADMINISTRATION
G/L ACCOUNT #:10-57120-820

ITEM DESCRIPTION	NEW USED	EST LIFE	2005 Approved	2006 Dept Request	2006 Budget	2007 Budget	2008 Budget	2009 Budget	2010 Budget		2006-10 Total	COMMENTS
											0	
											0	
TOTAL CAPITAL OUTLAYS			0	0	0	0	0	0	0		0	

DIVISION: 42 INFORMATION TECHNOLOGY
G/L ACCOUNT #:10-57142-820

ITEM DESCRIPTION	NEW USED	EST LIFE	2005 Approved	2006 Dept Request	2006 Budget	2007 Budget	2008 Budget	2009 Budget	2010 Budget		2006-10 Total	COMMENTS
Upgrade Computer Infrastructure	NEW	4	10,000			5,000	5,000	5,000	5,000		20,000	
Replace Main File Server	NEW	4					6,500				6,500	
Replace Mail Server & Software	NEW	4					6,500				6,500	
Replace Fire Server	NEW					6,500					6,500	
Plan Size Scanner - Engineering	NEW	5	20,000					20,000			20,000	
IS-Veritas Vault Software	NEW	-		32,000	32,000						32,000	New item-bring email & archiving into compliance
Clerk-Records Mgmt. Project	NEW	-		43,000	0						0	
TOTAL CAPITAL OUTLAYS			30,000	75,000	32,000	11,500	18,000	25,000	5,000		91,500	

CITY OF PEWAUKEE
FIVE YEAR CAPITAL BUDGET
2006 PROPOSED BUDGET
CAPITAL ASSETS COSTING \$5,000 OR MORE

DIVISION: 30 PROPERTY ASSESSMENT
G/L ACCOUNT #:10-57130-820

ITEM DESCRIPTION	NEW USED	EST LIFE	2005 Approved	2006 Dept Request	2006 Budget	2007 Budget	2008 Budget	2009 Budget	2010 Budget	2006-10 Total	COMMENTS
Assessment Roll System			0	15,000	0	15,000	7,500	5,000	7,500	35,000	
										0	
TOTAL CAPITAL OUTLAYS			0	15,000	0	15,000	7,500	5,000	7,500	35,000	

DIVISION: 50 POLICE
G/L ACCOUNT #:10-57210-820

ITEM DESCRIPTION	NEW USED	EST LIFE	2005 Approved	2006 Dept Request	2006 Budget	2007 Budget	2008 Budget	2009 Budget	2010 Budget	2006-10 Total	COMMENTS
Squad Cars	N	2	96,890	92,000	70,000	95,000	98,000	100,000	100,000	463,000	
Squad MDC Computers 3 in each year	N	5	5,000					12,000	12,000	24,000	
Records Storage	N	8	19,000								
Copier	N	10		7,200	0						
TOTAL CAPITAL OUTLAYS			120,890	99,200	70,000	95,000	98,000	112,000	112,000	487,000	

DIVISION: 50 SUMMER LAKE PATROL
G/L ACCOUNT #:10-57210-820

ITEM DESCRIPTION	NEW USED	EST LIFE	2005 Approved	2006 Dept Request	2006 Budget	2007 Budget	2008 Budget	2009 Budget	2010 Budget	2006-10 Total	COMMENTS
Engine	N	5								0	
Boat	N	5								0	
										0	
TOTAL CAPITAL OUTLAYS			0	0	0	0	0	0	0	0	

CITY OF PEWAUKEE
FIVE YEAR CAPITAL BUDGET
2006 PROPOSED BUDGET
CAPITAL ASSETS COSTING \$5,000 OR MORE

DIVISION: 50 WINTER LAKE PATROL
G/L ACCOUNT #:10-57212-820

ITEM DESCRIPTION	NEW USED	EST LIFE	2005 Approved	2006 Dept Request	2006 Budget	2007 Budget	2008 Budget	2009 Budget	2010 Budget	2006-10 Total	COMMENTS
										0	
										0	
TOTAL CAPITAL OUTLAYS			0	0	0	0	0	0	0	0	

DIVISION: 60 FIRE PROTECTION
G/L ACCOUNT #:10-57220-820

ITEM DESCRIPTION	NEW USED	EST LIFE	2005 Approved	2006 Dept Request	2006 Budget	2007 Budget	2008 Budget	2009 Budget	2010 Budget	2006-10 Total	COMMENTS
Pumper 1500 GPM #2871	N	5	160,000	236,000	236,000					236,000	
SCBA Face Piece NFPA Compliant	R	10				34,630				34,630	Meeting NFPA Compliance
8-Carbon Cylinders 2.2 (5 yr. Phase-in)	N	10				19,895	10,400	10,715	12,890	53,900	
42 - 2.2 and 4.5 SCBA NFPA Compliant	R	10				57,065	57,065	57,065		171,195	Meeting NFPA Compliance
Station #1 Recoat Apparatus Floors	R	10				10,500				10,500	Reduce slipping injuries
Stations #1 Paint Station	R	5				6,000				6,000	Aesthetic value
Station #1 Seal coat driveway	R	5				4,500				4,500	
Automobile - #2802	N	5								0	
Automobile #2801	R	5						24,500		24,500	Replacement
Copy Machine	R	10						25,000		25,000	Replacement
Automobile #2804	R	5	24,000							0	
TOTAL CAPITAL OUTLAYS			184,000	236,000	236,000	132,590	67,465	117,280	12,890	566,225	

CITY OF PEWAUKEE
FIVE YEAR CAPITAL BUDGET
2006 PROPOSED BUDGET
CAPITAL ASSETS COSTING \$5,000 OR MORE

DIVISION: 60 AMBULANCE AND RESCUE
G/L ACCOUNT #:10-57220-820

ITEM DESCRIPTION	NEW USED	EST LIFE	2005 Approved	2006 Dept Request	2006 Budget	2007 Budget	2008 Budget	2009 Budget	2010 Budget		2006-10 Total	COMMENTS
4 Lifpak 500 (Pediatric Defibrillator)	N	10	7,580								0	
Ambulance #2853	N/R	12		75,000	0	150,000					150,000	Replacement...Two payments
Ambulance #2851	N/R	12						53,000	53,000		106,000	Replacement...Three payments
Ambulance #2852	N/R	12					52,000	52,000	52,000		156,000	Replacement...Three payments
Defib 12 lead wires	N	10		24,000	0	24,000					24,000	Cardiac treatment requirement for 3 amb
											0	
											0	
TOTAL CAPITAL OUTLAYS			7,580	99,000	0	174,000	52,000	105,000	105,000		430,000	

DIVISION: 70 BUILDING SERVICES
G/L ACCOUNT #:10-57240-820

ITEM DESCRIPTION	NEW USED	EST LIFE	2005 Approved	2006 Dept Request	2006 Budget	2007 Budget	2008 Budget	2009 Budget	2010 Budget		2006-10 Total	COMMENTS
Open wall for additional inspector station		15		4,450	0						0	Convert old admin/planner office from conference room to Building Services Dept. office area
Desk set and work station expansion	new	15		7,800	0						0	Increase Tammy's station and add new desk set in altered office area
File cabinets and plan holding files				450	0						0	Manage active large plans-Move to New equipment
											0	
TOTAL CAPITAL OUTLAYS			0	12,700	0	0	0	0	0		0	

CITY OF PEWAUKEE
FIVE YEAR CAPITAL BUDGET
2006 PROPOSED BUDGET
CAPITAL ASSETS COSTING \$5,000 OR MORE

DIVISION: 80 PUBLIC WORKS - HIGHWAY OPERATIONS
G/L ACCOUNT #:10-57331-820

ITEM DESCRIPTION	NEW USED	EST LIFE	2005 Approved	2006 Dept Request	2006 Budget	2007 Budget	2008 Budget	2009 Budget	2010 Budget	2006-10 Total	COMMENTS
#18 Replace Front End Loader	N	15	52,000				55,000			55,000	
Replacement for #55 4 x 4 Pickup Plow	N	10		45,000	0	45,000				45,000	1 ton Dump - Plow
Skid Loader Trailer	N	15	6,500							0	
Cruz-Air -new	N	15				200,000				200,000	
#6 Plow Truck (Replace) 1994	N	10		120,000	120,000					120,000	
Bucket Truck	N	15		75,000	0	75,000				75,000	
Replace #5 Back Hoe	N	15		42,000	0	42,000			45,000	87,000	
#8 Plow Truck 1996	N	10				120,000				120,000	
#12 Replace Plow Truck 1997	N	10				120,000				120,000	
#13 Roller 1989	N	10				12,000				12,000	
#14 Broom	N	10				10,000				10,000	
#17 Tandem Plow Truck 1993	N	10					160,000			160,000	
Fork lift -replace	N	10					32,000			32,000	
#58 Replace Skidsteer Loader 1998	N	10					20,000			20,000	
#7 Plow truck 1999	N	10					120,000				
#19 Plow Truck 1998	N	10						120,000		120,000	
#20 Sweeper 1998	N	12							160,000	160,000	
#25 4x4 Pickup Truck 2001	N	8						25,000		25,000	
#56 Sign Truck 2000	N	8							50,000		
										0	
TOTAL CAPITAL OUTLAYS			58,500	282,000	120,000	624,000	387,000	145,000	255,000	1,361,000	

CITY OF PEWAUKEE
FIVE YEAR CAPITAL BUDGET
2006 PROPOSED BUDGET
CAPITAL ASSETS COSTING \$5,000 OR MORE

DIVISION: 81 ENGINEERING
G/L ACCOUNT #:10-57311-820

ITEM DESCRIPTION	NEW USED	EST LIFE	2005 Approved	2006 Dept Request	2006 Budget	2007 Budget	2008 Budget	2009 Budget	2010 Budget	2006-10 Total	COMMENTS
										0	
TOTAL CAPITAL OUTLAYS			0	0	0	0	0	0	0	0	

DIVISION: LAKE MANAGEMENT
G/L ACCOUNT #:10-57364-820

ITEM DESCRIPTION	NEW USED	EST LIFE	2005 Approved	2006 Dept Request	2006 Budget	2007 Budget	2008 Budget	2009 Budget	2010 Budget	2006-10 Total	COMMENTS
T34 Transport Barge	NEW	10	0	101,795	0	101,795				101,795	
Retrofit Barge motor/paddlewheels				25,000	25,000					25,000	
11Ft. Harvester plus Trailer **	NEW	10	0	150,000	0	150,000				150,000	
TOTAL CAPITAL OUTLAYS			0	276,795	25,000	251,795	0	0	0	276,795	

DIVISION: 90 PARKS AND RECREATION - City of Pewaukee Only
G/L ACCOUNT #:10-57620-820

ITEM DESCRIPTION	NEW USED	EST LIFE	2005 Approved	2006 Dept Request	2006 Budget	2007 Budget	2008 Budget	2009 Budget	2010 Budget	2006-10 Total	COMMENTS
Wagner Curb Work	R		15,000	15,000	10,000					10,000	
South - Sewer Assessment	R		11,753							0	
Springdale Play Equipment	NEW		6,000							0	
ADA - Balmer restroom	R			30,000	0	30,000				30,000	
Hook-up Net Park to City Water	R			15,000	15,000					15,000	
Bleacher Pads	R			6,000	6,000	6,000	6,000			18,000	
South Parking Lot	R					34,000				34,000	
South - Sewer Hook-up	R						15,000			15,000	
Repave Balmer Parking Lot - expand?				23,000	23,000					23,000	
Total			32,753	89,000	54,000	70,000	21,000	0	0	145,000	

CITY OF PEWAUKEE
FIVE YEAR CAPITAL BUDGET
2006 PROPOSED BUDGET
CAPITAL ASSETS COSTING \$5,000 OR MORE

DIVISION: 90 PARKS AND RECREATION - Shared Items

G/L ACCOUNT #:10-57620-820

ITEM DESCRIPTION	NEW USED	EST LIFE	2005 Approved	2006 Dept Request	2006 Budget	2007 Budget	2008 Budget	2009 Budget	2010 Budget	2006-10 Total	COMMENTS
										0	
#77 1 ton dump 4 x 4 Joint	NEW		41,000							0	
#86 Wing Mower - Joint	NEW		28,000				29,000			29,000	
#83 Wing Mower - Joint	NEW					29,000				29,000	
Jt Park/Open Space Plan Update	R		3,000							0	
#82 1 ton dump - Joint	NEW					42,000				42,000	
Replace sand pro # 91 - Joint	NEW			11,000	11,000			11,000		22,000	
Kubota - Blower & Broom	NEW									0	
ADA asphalt paths in parks - Joint	NEW			6,000	6,000	6,000	6,000			18,000	
#96 Wing Mower - Joint	NEW					50,000				50,000	
Park/Rec Vehicle - Joint	NEW					36,000				36,000	
#76 Utility Truck	NEW						42,000			42,000	
#80 1 Ton Pickup 4X4 Plow	NEW						32,000			32,000	
#87 Tractor/Loader	NEW						24,500			24,500	
Total			72,000	17,000	17,000	163,000	133,500	11,000	0	324,500	

Less Village of Pewaukee share 33% 23,760 5,610 5,610

City of Pewaukee's net share 67% 48,240 11,390 11,390

Net City Share of Capital Items 80,993 100,390 65,390

CITY OF PEWAUKEE
 2006 PROPOSED BUDGET
 SPECIAL REVENUE - PARK DEDICATION FUND

	2004 Actual	2005			2006 Budget	
		6 Month Actual	6 Month Estimate	Year End Forecast		
Revenues and Other Sources						
20- 44450 Park & Open Space Fees	\$ 34,650	30,150	15,750	45,900	56,300	184,500
20- 48100 Interest Earnings	563	312	88	400	-	1,400
20- 48500 Donations	250	-	-	-	-	-
Total Revenue and Other Sources	35,463	30,462	15,838	46,300	56,300	185,900
Expenditures and Other Uses						
20- 57620- 810 Capital Expenditures	-	-	-	-	-	-
20- 59230- 900 Transfer to Debt Service Fund	35,213	-	50,866	50,866	50,866	51,241
Total Expenditures and Other Uses	35,213	-	50,866	50,866	50,866	51,241
Excess Revenues and Other Sources Over Expenditures and Other Uses	250	30,462	(35,028)	(4,566)	5,434	134,659
Fund Balance:						
Beginning of Period	10,609	10,859	41,321	10,859	10,859	6,293
End of Period	\$ 10,859	41,321	6,293	6,293	16,293	140,952

CITY OF PEWAUKEE
 2006 BUDGET
 SPECIAL REVENUE - IMPACT FEE FUND

	2004 Actual	2005			2006 Budget	
		6 Month Actual	6 Month Estimate	Year End Forecast		
Revenues						
22- 46900 Impact Fees	\$ 186,741	75,598	75,000	150,598	100,000	170,000
22- 48100 Interest on Investments	10,292	3,120	5,000	8,120	1,500	15,000
Total Revenues	197,033	78,718	80,000	158,718	101,500	185,000
Transfers to Other Funds						
22- 59230- 900 Transfer to Building Construction Funds	1,436,505	-	-	-	60,000	-
22- 59230- 930 Transfer to Debt Service Funds	61,341	-	61,695	61,695	96,070	-
Total Expenditures and Other Uses	1,497,846	-	61,695	61,695	156,070	-
Excess Revenues Over Expenditures and Other Uses	(1,300,813)	78,718	18,305	97,023	(54,570)	185,000
Fund Balance:						
Beginning of Period	1,640,455	339,642	418,360	339,642	339,642	436,665
End of Period	\$ 339,642	418,360	436,665	436,665	285,072	621,665

CITY OF PEWAUKEE
 2006 PROPOSED BUDGET
 SPECIAL REVENUE - TOURISM & CONVENTION

	2004 Actual	2005			2006 Budget	
		6 Month Actual	6 Month Estimate	Year End Forecast		
Revenues						
25- 41210 Public Accomodation Tax	\$ 397,695	209,907	219,993	429,900	402,500	432,000
25- 48100 Interest on Investments	1,314	-	-	-	-	-
Total Revenues	399,009	209,907	219,993	429,900	402,500	432,000
Transfers to Other Funds						
25- 56700- 900 Tourism	357,514	91,661	466,452	558,113	402,500	432,000
Total Expenditures and Other Uses	357,514	91,661	466,452	558,113	402,500	432,000
Excess Revenues Over Expenditures and Other Uses	41,495	118,246	(246,459)	(128,213)	-	-
Fund Balance:						
Beginning of Period	86,718	128,213	246,459	128,213	-	-
End of Period	\$ 128,213	246,459	-	-	-	-

CITY OF PEWAUKEE
2006 PROPOSED BUDGET
SPECIAL REVENUE - GREEN SPACE FACILITIES

	2004 Actual	2005			2006 Budget	
		6 Month Actual	6 Month Estimate	Year End Forecast		
Revenues						
26- 41210 Public Accomodation Tax	\$ 85,221	44,980	47,020	92,000	86,250	92,600
26- 43570 Grants	-	-	-	-	484,000	551,200
25- 48100 Interest on Investments	-	-	-	-	1,500	-
Total Revenues	85,221	44,980	47,020	92,000	571,750	643,800
Transfers to Other Funds						
26- 57300- 900 STH 164 Riverwood to N of Capital	220,880	-	-	-	-	-
26- 57300- 900 CTH M & Green Road	-	78	17,422	17,500	467,000	426,000
26- 57300- 900 STH 164, Riverwood S to Tower Pl	-	-	49,000	49,000	161,500	112,500
26- 57300- 900 Green Rd, Springdale to Wagner Pk	-	-	-	-	-	84,000
26- 57300- 900 STH 16 Overpass at WCTC	-	-	8,400	8,400	-	-
Total Expenditures and Other Uses	220,880	78	74,822	74,900	628,500	622,500
Excess Revenues Over Expenditures and Other Uses	(135,659)	44,902	(27,802)	17,100	(56,750)	21,300
Fund Balance:						
Beginning of Period	124,925	(10,734)	34,168	(10,734)	6,366	6,366
End of Period	\$ (10,734)	34,168	6,366	6,366	(50,384)	27,666

CITY OF PEWAUKEE
2006 PROPOSED BUDGET
DEBT SERVICE FUND

	2004 Actual	2005			2006 Budget	
		6 Month Actual	6 Month Estimate	Year End Forecast		
Revenues and Other Sources						
30- 41110 General Tax Levy	\$ 443,500	683,170	-	683,170	683,170	860,305
30- 423XX/481XX Special Assessments	247,839	174,220	48,107	222,327	175,000	185,000
30- 48116 Interest on Idle Funds	8,238	-	20,000	20,000	8,500	20,000
30- 49200 Transfer from Park Fund	35,213	-	50,866	50,866	50,866	51,241
30- 49220 Transfer from Impact Fees	61,341	-	96,070	96,070	96,070	-
Total Revenues & Other Sources	796,131	857,390	215,043	1,072,433	1,013,606	1,116,546
Expenditures						
30- 58100- 610 Principal Retirement	642,131	508,000	108,315	616,315	790,630	943,716
30- 58200- 620 Interest Expense	211,376	175,347	164,642	339,989	322,476	322,830
30- 58200- 690 Fiscal Charges	-	-	-	-	500	-
Total Expenditures	853,507	683,347	272,957	956,304	1,113,606	1,266,546
Excess of Revenues and Other Sources over (under) Expenditures	(57,376)	174,043	(57,914)	116,129	(100,000)	(150,000)
Fund Balance:						
Beginning of Period	702,610	645,234	819,277	645,234	645,234	761,363
End of Period	645,234	819,277	761,363	761,363	545,234	611,363

CITY OF PEWAUKEE
 2006 PROPOSED BUDGET
 CAPITAL PROJECT FUND - Road Projects

	2004 Actual	2005			2006 Budget
		6 Month Actual	6 Month Estimate	Year End Forecast	
Revenues and Other Sources					
42- 41110 General Tax Levy	\$ 337,300	345,030	-	345,030	354,600
42- 43534 Grants & Developers	-	-	-	-	32,200
42- 49110 Proceeds of Long-Term Debt	-	-	-	-	-
42- 48100 Interest on Idle Funds	16,315	-	36,000	36,000	38,000
Total Revenue and Other Sources	353,615	345,030	36,000	381,030	424,800
Expenditures and Other Uses					
42- 57xxx- 820 Street Reconstruction	316,037	-	-	-	755,000
42- 57xxx- 820 Traffic Signal Pre-emption	-	-	-	-	25,000
42- 58200- 699 Maple Way South & North	-	-	-	-	314,000
42- 58200- 699 Transfer to Capital Projects Fund	200,800	-	-	-	-
Total Expenditures	516,837	-	-	-	1,094,000
Excess of Revenues Over (Under) Expenditures	(163,222)	345,030	36,000	381,030	(669,200)
Fund Balance:					
Beginning of Period	1,416,194	1,252,972	1,598,002	1,252,972	1,634,002
End of Period	\$ 1,252,972	1,598,002	1,634,002	1,634,002	964,802

2006 Road Projects	Project Costs	Budgeted Costs	% Assessable	Assessable Cost	Developer & LRIP Grants	Tax Levy Non- Assessable
Green Road (Springdale to Redford Blvd)	120,000	120,000	50%	60,000		60,000
Duplainville (Green Road to R/R)	165,000	0	90%	0		
Duplainville (Green Road to Capitol)	114,000	0	61%	0		
Arrowhead Trails	480,000	240,000	33%	79,200		160,800
Oaks Spring	130,000	130,000	20%	26,000		104,000
Weyer Road (Budget = engineering only)	455,000	20,000	0%	0	10,000	10,000
Ishnala	375,000	0	20%	0		0
Tower	165,000	165,000	100%	165,000		0
Springdale	185,000	0	57%	0		0
Beaver	80,000	80,000	0%	0	22,200	57,800
Total	2,269,000	755,000		330,200	32,200	392,600
					Less Interest Earned	(38,000)
					Tax levy for road projects	354,600

CITY OF PEWAUKEE
 2006 PROPOSED BUDGET
 STORM WATER & DRAINAGE PROJECTS

	2004 Actual	2005			2006 Budget
		6 Month Actual	6 Month Estimate	Year End Forecast	
Revenues and Other Sources					
41-41110 General Tax Levy	\$ -	-	-	-	-
41-43535 DNR Grants	-	-	36,190	36,190	47,500
41-48100 Interest Revenues	1,518	-	1,500	1,500	2,000
41-49110 Proceeds of Long-term Debt	-	-	-	-	-
Total Revenue and Other Sources	1,518	-	37,690	37,690	49,500
Expenditures					
Storm Water Studies					
41-57330- Storm Water Permit	-	1,500	1,000	2,500	2,500
41-57330- Mapping	-	-	-	-	5,000
41-57330- Information & Education	-	-	-	-	2,000
41-57330- Implementation	-	-	10,000	10,000	70,000
Storm Water Improvements					
41-5914x 821 Rocky Point Biofiltration Design	-	-	15,000	15,000	79,500
Ditch Maintenance					
41-57330-821 Woodside Drive Storm Water	1,838	-	-	-	-
41-59140-821 Oak St/Ash St Ditch Cleaning	14,372	-	-	-	-
		-	-	-	-
Total Expenditures	16,210	1,500	26,000	27,500	159,000
Excess of Revenues Over (Under) Expenditures	(14,692)	(1,500)	11,690	10,190	(109,500)
Fund Balance:					
Beginning of Year	131,506	116,814	115,314	116,814	127,004
End of Year	\$ 116,814	115,314	127,004	127,004	17,504

CITY OF PEWAUKEE
 2006 PROPOSED BUDGET
 CAPITAL PROJECTS FUND
 BUILDINGS - CITY HALL EXPANSION

	2004 Actual	2005			2006 Budget
		6 Month Actual	6 Month Estimate	Year End Forecast	
Revenues and Other Sources					
43 48110 Interest Earnings	\$ -	-	-	-	-
43 49910 Transfer from Road Projects Fund	200,800	-	-	-	-
43 49911 Transfer from General Fund	-	-	300,000	300,000	-
43 49920 Transfer from Impact Fee Fund	1,436,505	-	-	-	-
Total Revenue and Other Sources	1,637,305	-	300,000	300,000	-
Expenditures and Other Uses					
43 57140- 810 City Hall Expansion	3,240,559	49,638	250,362	300,000	-
Total Expenditures and Other Uses	3,240,559	49,638	250,362	300,000	-
Excess Revenues & Other Sources Over Expenditures & Other Uses	(1,603,254)	(49,638)	49,638	-	-
Fund Balance:					
Beginning of Period	1,603,254	-	(49,638)	-	-
End of Period	\$ -	(49,638)	-	-	-

CITY OF PEWAUKEE
 CAPITAL PROJECTS FUND
 Fire Stations

	2004 Actual	2005			2006 Budget	
		6 Month Actual	6 Month Estimate	Year End Forecast		
Revenues and Other Sources						
45 41100 Property Tax Levy	\$ -	140,000	-	140,000	140,000	-
45 49220 Transfer from Impact Fees	-	-	-	-	60,000	-
45 48110 Interest Earnings	-	32,400	40,600	73,000	-	84,000
45 49110 Proceeds of Long-term Debt	3,335,434	-	-	-	-	-
Total Revenue and Other Sources	3,335,434	172,400	40,600	213,000	200,000	84,000
Expenditures and Other Uses						
45 57620- 810 West Side Fire Station	67,782	103,665	26,335	130,000	3,500,000	-
45 57620- 810 East Side Land	-	-	215,000	215,000	-	-
45 58200- 699 Bond Issues Costs	23,254	-	-	-	-	-
Total Expenditures and Other Uses	91,036	103,665	241,335	345,000	3,500,000	-
Excess Revenues & Other Sources Over Expenditures & Other Uses	3,244,398	68,735	(200,735)	(132,000)	(3,300,000)	84,000
Fund Balance:						
Beginning of Period	-	3,244,398	3,313,133	3,244,398	3,244,398	3,112,398
End of Period	\$ 3,244,398	3,313,133	3,112,398	3,112,398	(55,602)	3,196,398

CITY OF PEWAUKEE
 2006 PROPOSED BUDGET
 CAPITAL PROJECTS FUND
 PARK LAND PURCHASE

	2004 Actual	2005			2006 Budget	
		6 Month Actual	6 Month Estimate	Year End Forecast		
Revenues and Other Sources						
46 49110 Proceeds of Long-term Debt	\$ -	-	-	-	1,000,000	-
46 48110 Interest Earnings	12,175	12,400	12,500	24,900	-	35,000
Total Revenue and Other Sources	12,175	12,400	12,500	24,900	1,000,000	35,000
Expenditures and Other Uses						
46 58200- 699 Park Land Purchase	12,087	6,445	-	6,445	2,000,000	-
46 58200- 699 Debt Issue Costs		-	-	-	8,388	-
Total Expenditures and Other Uses	12,087	6,445	-	6,445	2,008,388	-
Excess Revenues & Other Sources Over Expenditures & Other Uses	88	5,955	12,500	18,455	(1,008,388)	35,000
Fund Balance:						
Beginning of Period	995,888	995,976	1,001,931	995,976	-	1,014,431
End of Period	\$ 995,976	1,001,931	1,014,431	1,014,431	(1,008,388)	1,049,431

City of Pewaukee
 Assessed & Equalized Tax Rates
 Budget Year 1995 - 2006
 2006 Estimated

Budget Year	Assessed Value	Equalization Ratio	Equalized Value	Tax Levy			Tax Rate per \$1,000		
				City	Sanitary District #3	LPSD	Total Levy	Per Assessed Value	Per Equalized Value
2006	2,067,500,000	84.231%	2,454,567,500	6,613,247			6,613,247	\$ 3.199	\$ 2.694
2005	2,018,157,310	90.366%	2,239,922,900	6,057,582			6,057,582	\$ 3.002	\$ 2.704
2004	1,998,638,205	97.970%	2,040,054,500	5,222,388			5,222,388	\$ 2.613	\$ 2.560
2003	1,623,325,580	86.796%	1,870,277,100	5,106,934			5,106,934	\$ 3.146	\$ 2.731
2002	1,563,798,910	92.593%	1,680,713,400	4,677,230			4,677,230	\$ 2.991	\$ 2.783
2001	1,463,313,500	96.124%	1,522,318,900	4,243,615			4,243,615	\$ 2.900	\$ 2.788
2000	1,370,941,360	104.423%	1,312,870,400	3,921,000			3,921,000	\$ 2.860	\$ 2.987
1999	966,978,455	76.829%	1,258,609,100	3,503,186	256,488	103,694	3,863,368	\$ 3.995	\$ 3.070
1998	901,165,185	77.521%	1,162,482,000	3,241,318	239,201	112,222	3,592,741	\$ 3.987	\$ 3.091
1997	844,003,386	82.080%	1,028,273,200	2,939,150	222,467	110,106	3,271,723	\$ 3.876	\$ 3.182
1996	840,783,850	84.473%	995,329,800	2,575,700	215,978	126,179	2,917,857	\$ 3.470	\$ 2.932
1995	780,766,030	88.150%	885,719,800	2,200,545	198,419	130,571	2,529,535	\$ 3.240	\$ 2.856